

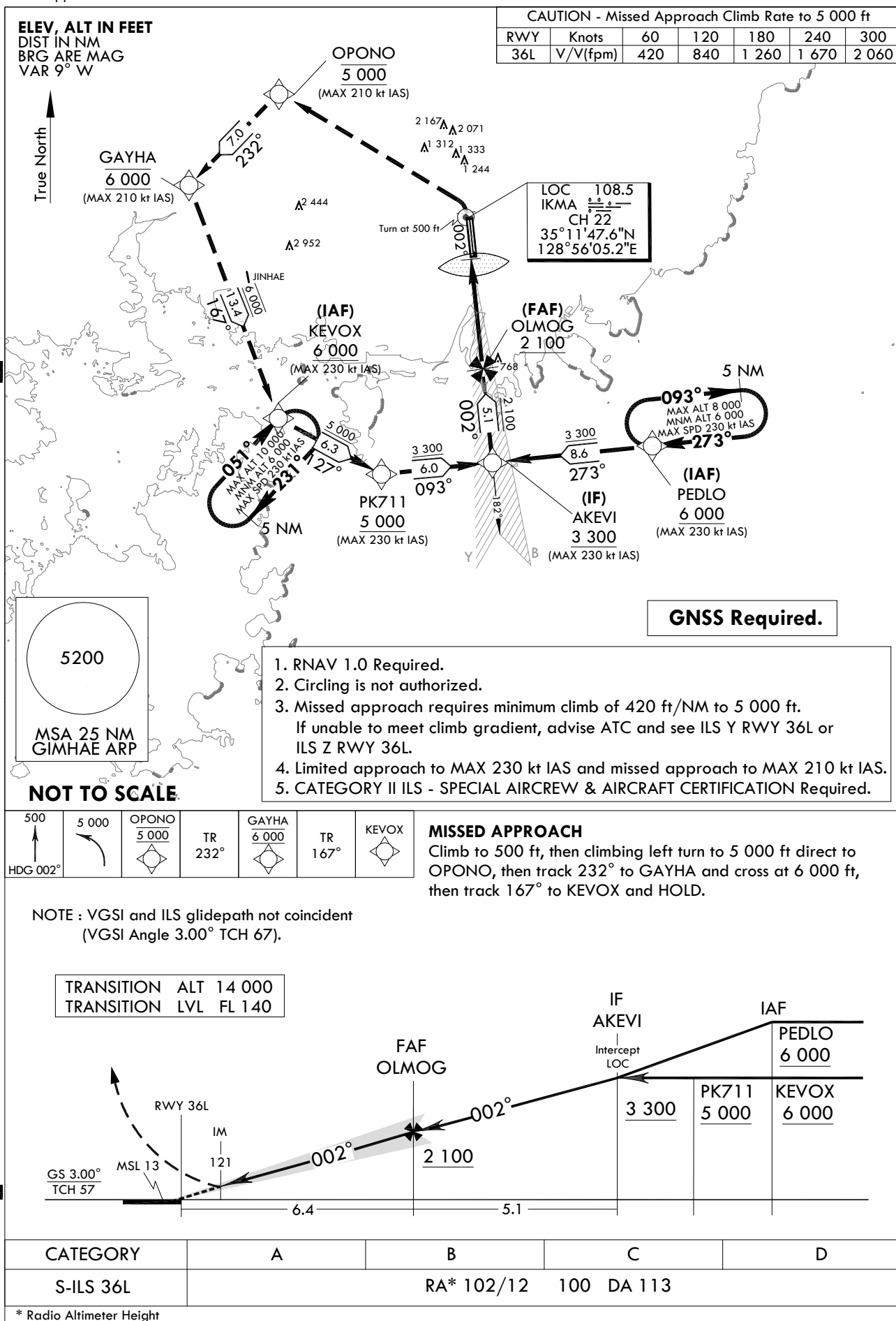
**INSTRUMENT
APPROACH
CHART**

AERODROME ELEV 13 ft
HEIGHTS RELATED TO
RWY 36L ELEV TDZ 13 ft

GIMHAE APP 125.5 364.0
GIMHAE TWR 118.1 118.45
233.3 236.6

BUSAN/Gimhae Intl(RKPK)
ILS RWY 36L
CAT II

Note : Approach and circle to land under U.S. TERPS.



Change : Amended chart symbols.

AERONAUTICAL DATA TABULATION

Instrument Approach Procedure Coding Tables

ILS RWY 36L CAT II - via PEDLO to AKEVI(If)

Serial Number	Path Descriptor	Waypoint Identifier	Fly-over	Course/Track °M(T)	Distance (NM)	Turn direction	Altitude (ft)	Speed (kt)	Coordinates	VPA/TCH	Navigation specification	Remarks
001	-	PEDLO	-	-	-	-	+6 000	-230	34°59'23.1"N 129°08'15.3"E	-	RNAV 1	IAF
002	TF	AKEVI	-	272.59(264.07)	8.6	-	+3 300	-230	34°58'29.0"N 128°57'48.0"E	-	RNAV 1	IF

ILS RWY 36L CAT II - via KEVOX to AKEVI(If)

Serial Number	Path Descriptor	Waypoint Identifier	Fly-over	Course/Track °M(T)	Distance (NM)	Turn direction	Altitude (ft)	Speed (kt)	Coordinates	VPA/TCH	Navigation specification	Remarks
001	-	KEVOX	-	-	-	-	+6 000	-230	35°00'51.7"N 128°43'47.2"E	-	RNAV 1	IAF
002	TF	PK711	-	126.82(118.30)	6.3	-	+5 000	-230	34°57'51.9"N 128°50'32.3"E	-	RNAV 1	SDF
003	TF	AKEVI	-	092.58(084.06)	6.0	-	+3 300	-230	34°58'29.0"N 128°57'48.0"E	-	RNAV 1	IF

ILS RWY 36L CAT II - via AKEVI(If) to MAHF

Serial Number	Path Descriptor	Waypoint Identifier	Fly-over	Course/Track °M(T)	Distance (NM)	Turn direction	Altitude (ft)	Speed (kt)	Coordinates	VPA/TCH	Navigation specification	Remarks
001	TF	AKEVI	-	-	-	-	+3 300	-230	34°58'29.0"N 128°57'48.0"E	-	RNAV 1	IF
002	TF	OLMOG	-	002.49(353.97)	5.1	-	+2 100	-	35°03'32.1"N 128°57'09.1"E	-	-	FAF
003	-	DA	-	002.49(353.97)	-	-	+113	-	-	-	LOC	DA
004	-	RWY 36L	-	002.49(353.97)	-	-	-	-	35°09'54.7"N 128°56'19.8"E	3.0/57	LOC	-
005	VA	-	-	002.49(353.97)	-	-	+500	-210	-	-	RNAV 1	CG 420 ft/NM to 5 000 ft
006	DF	OPONO	-	-	-	L	@5 000	-210	35°18'24.2"N 128°43'46.2"E	-	RNAV 1	-
007	TF	GAYHA	-	232.27(223.75)	7.0	-	@6 000	-210	35°13'22.4"N 128°37'54.4"E	-	RNAV 1	-
008	TF	KEVOX	-	167.38(158.86)	13.4	-	+6 000	-230	35°00'51.7"N 128°43'47.2"E	-	RNAV 1	-

HOLDING PROCEDURE

Holding Identification	Path Descriptor	Waypoint Identifier	Fly-over	Course/Track °M(T)	Distance (NM)	Turn direction	Altitude (ft)	Speed (kt)	Coordinates	VPA/TCH	Navigation specification	Remarks
ILS RWY 36L CAT II	HM	PEDLO	-	272.59(264.07)	5.0	R	-8 000 +6 000	-230	34°59'23.1"N 129°08'15.3"E	-	RNAV 1	Hold at PEDLO E Right Turn 273° Inbound 5 NM Leg.
	HM	KEVOX	-	051.05(042.53)	5.0	R	-10 000 +6 000	-230	35°00'51.7"N 128°43'47.2"E	-	RNAV 1	Hold at KEVOX SW Right Turn 051° Inbound 5 NM Leg.

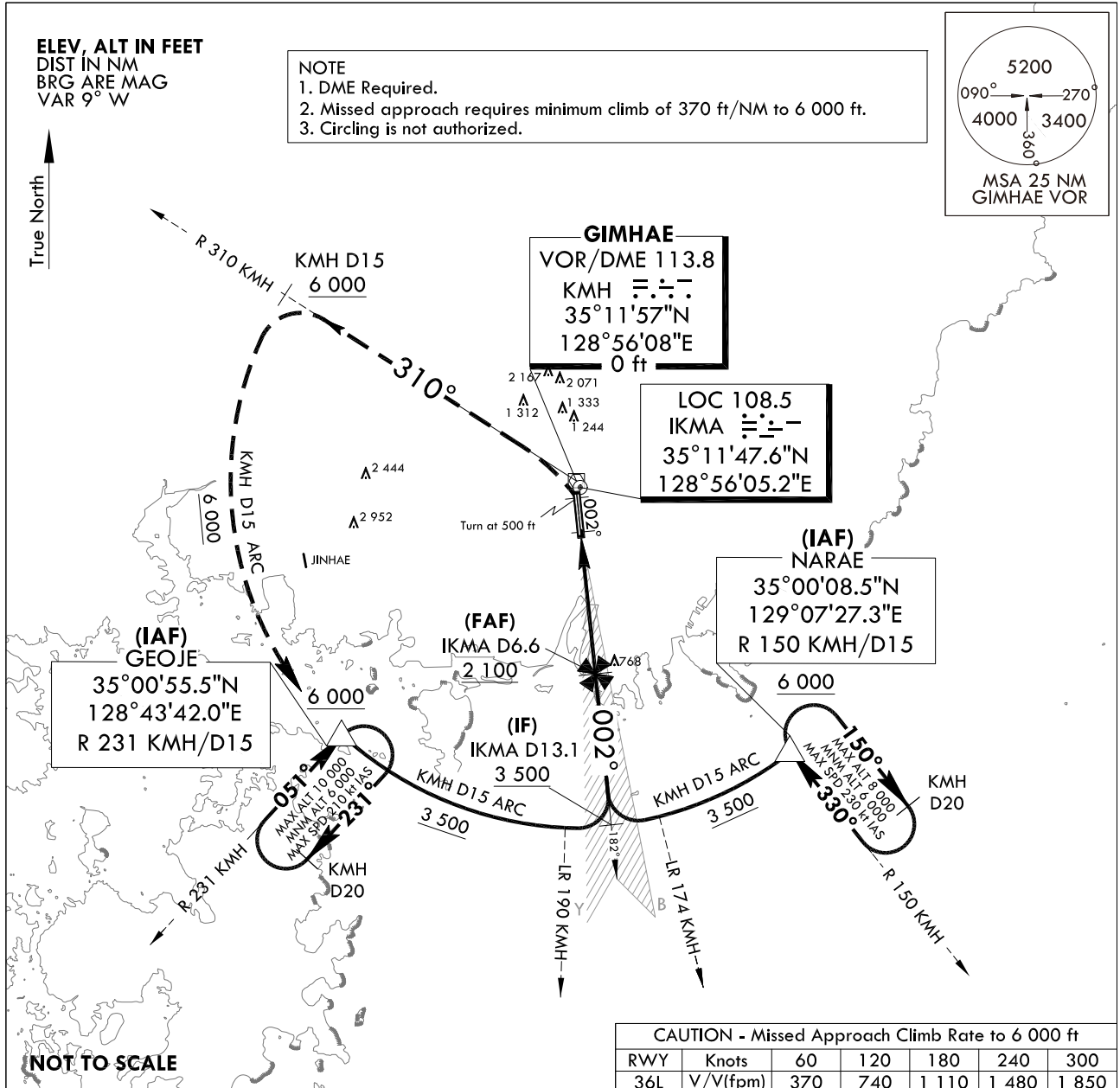
**INSTRUMENT
APPROACH
CHART**

AERODROME ELEV 13 ft
HEIGHTS RELATED TO
RWY 36L ELEV TDZ 13 ft

GIMHAE APP 125.5 364.0
GIMHAE TWR 118.1 118.45
233.3 236.6

BUSAN/Gimhae Intl(RKPK)
ILS Y RWY 36L

Note : Approach and circle to land under U.S. TERPS.



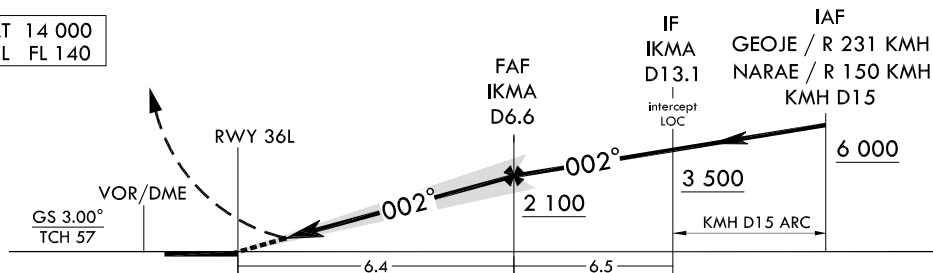
MISSED APPROACH

Climb to 500 ft then climbing left turn to 6 000 ft on R 310 KM H to 15 DME and at or above 6 000 ft, then arc KM H D15 to GEOJE and hold.

NOTE : Use IKMA DME when on the localizer course.

NOTE : VGSI and ILS glidepath not coincident (VGSI Angle 3.00° TCH 67).

TRANSITION ALT 14 000
TRANSITION LVL FL 140



CATEGORY	A	B	C	D
S-ILS 36L	213/18 200 (200 - 1/2)	213/24* 200(200-1/2) (*Use civil only RVR 18)		
	When TDZ/CL LGT INOP, increase RVR to 24			
ALS INOP	213/40 200(200 - 3/4)			

Change : Amended chart symbol.

INTENTIONALLY

LEFT

BLANK

AERODROME ELEV 13 ft
HEIGHTS RELATED TO
THR RWY 36L - ELEV 12 ft

GIMHAE	APP	125.5	364.0
GIMHAE	TWR	118.1	118.45
		233.3	236.6

BUSAN/Gimhae Intl(RKPK)
LOC Y RWY 36L

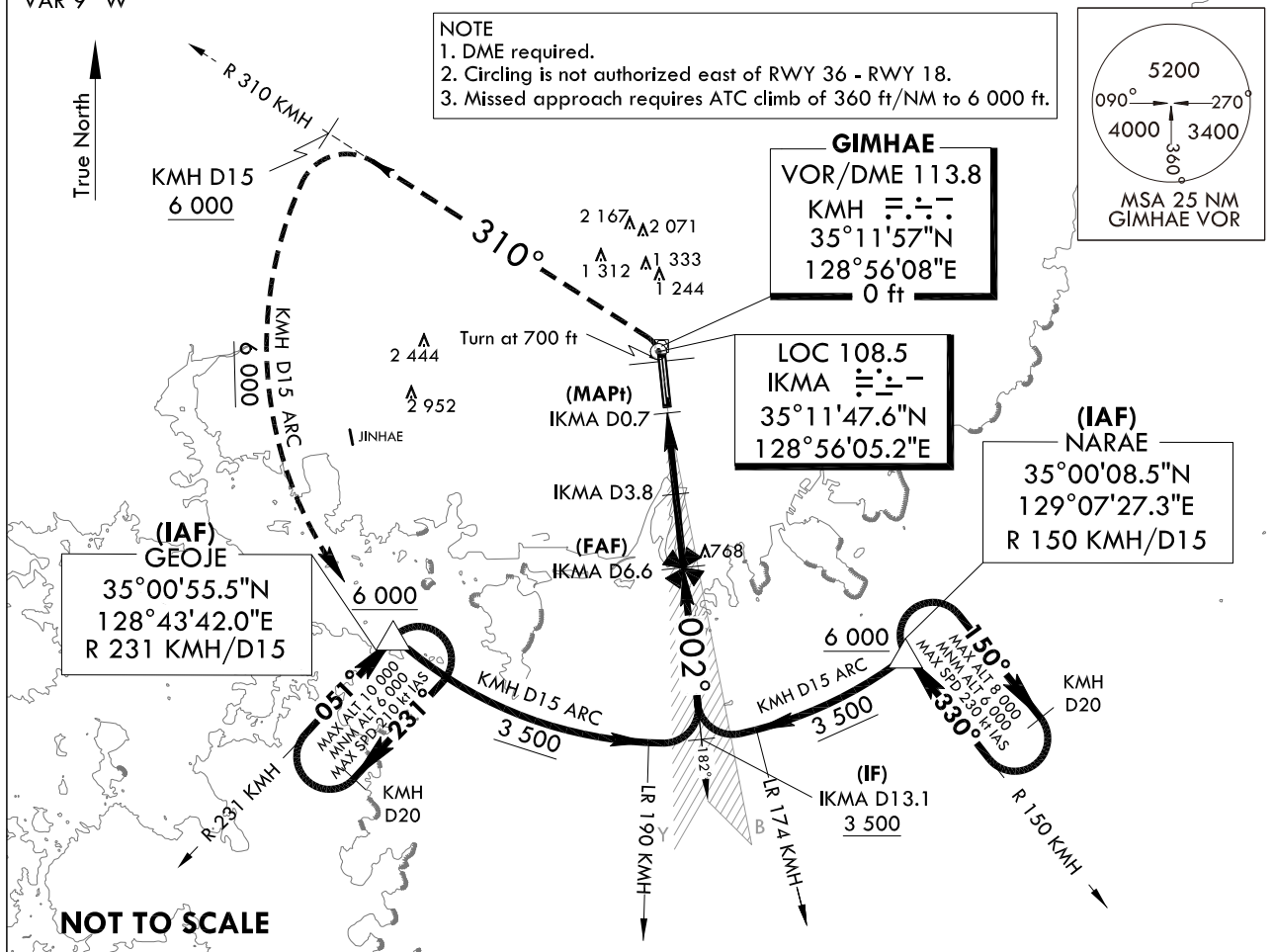
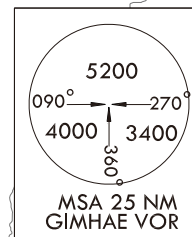
Note : Approach and circle to land under U.S. TERPS.

CAUTION - Missed Approach Climb Rate to 6 000 ft						
RWY	Knots	60	120	180	240	300
36L	V/V(fpm)	360	720	1 080	1 440	1 800

ELEV, ALT IN FEET
DIST IN NM
BRG ARE MAG
VAR 9° W

NOTE

1. DME required.
2. Circling is not authorized east of RWY 36 - RWY 18.
3. Missed approach requires ATC climb of 360 ft/NM to 6 000 ft.



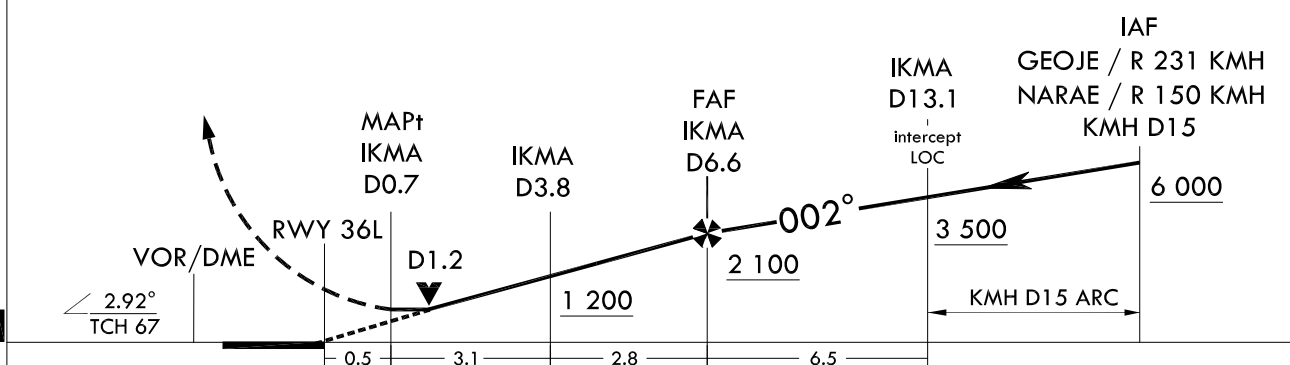
<p>700</p> <p>↑</p> <p>HDG 002°</p>	<p>6 000</p> <p>R 310</p> <p>KMH</p>	<p>KMH</p> <p>D15</p>	<p>KMH D15</p> <p>ARC</p>	<p>GEOJE</p> <p>△</p>
-------------------------------------	--------------------------------------	-----------------------	---------------------------	-----------------------


MISSED APPROACH

Climb to 700 ft, then left turn climbing 6 000 ft on R 310 KMH to 15 DME, then arc KMH D15 to GEOJE and hold.

NOTE : Use IKMA DME when on the localizer course.

TRANSITION	ALT	14 000
TRANSITION	LVL	FL 140



CATEGORY	A	B	C	D
S-LOC 36L	400/24	388(400 - 1/2)	400/35	388(400 - 5/8)
ALS INOP	400/55	388(400 - 1)	400/60	388(400 - 1 1/8)
 CIRCLING	520-1 507(600 - 1)	580-1 567(600 - 1)	1 360 - 3 1 347(1 400 - 3)	1 700 - 3 1 687(1 700 - 3)

Change : Amended chart symbol.

INTENTIONALLY

LEFT

BLANK

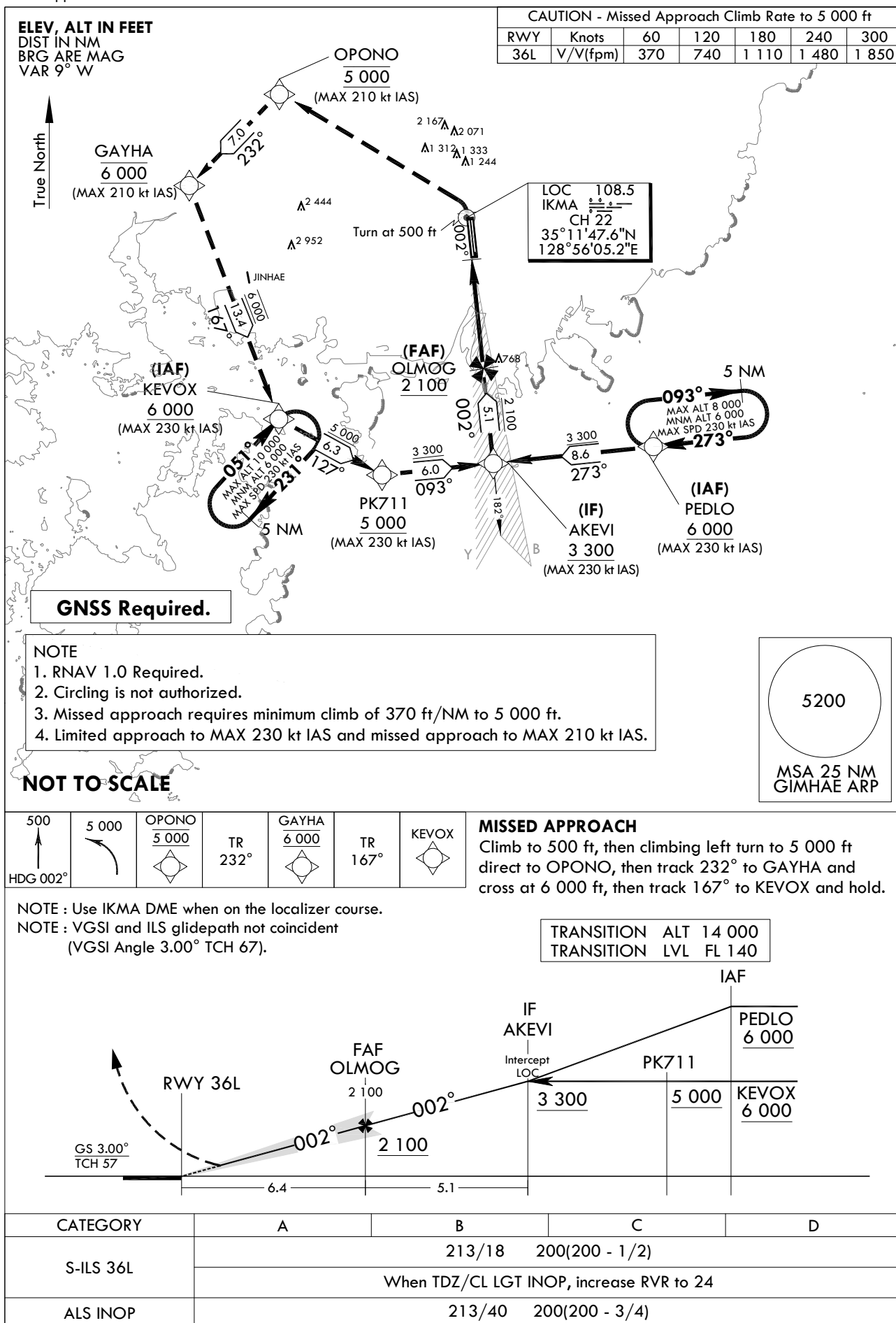
**INSTRUMENT
APPROACH
CHART**

AERODROME ELEV 13 ft
HEIGHTS RELATED TO
RWY 36L ELEV TDZ 13 ft

GIMHAE APP 125.5 364.0
GIMHAE TWR 118.1 118.45
233.3 236.6

BUSAN/Gimhae Intl(RKPK)
ILS Z RWY 36L

Note : Approach and circle to land under U.S. TERPS.



Change : Amended chart symbols.

AERONAUTICAL DATA TABULATION

Instrument Approach Procedure Coding Tables

ILS Z RWY 36L - via PEDLO to AKEVI(IF)

Serial Number	Path Descriptor	Waypoint Identifier	Fly-over	Course/Track °M(°T)	Distance (NM)	Turn direction	Altitude (ft)	Speed (kt)	Coordinates	VPA/TCH	Navigation specification	Remarks
001	-	PEDLO	-	-	-	-	+6 000	-230	34°59'23.1"N 129°08'15.3"E	-	RNAV 1	IAF
002	TF	AKEVI	-	272.59(264.07)	8.6	-	+3 300	-230	34°58'29.0"N 128°57'48.0"E	-	RNAV 1	IF

ILS Z RWY 36L - via KEVOX to AKEVI(IF)

Serial Number	Path Descriptor	Waypoint Identifier	Fly-over	Course/Track °M(°T)	Distance (NM)	Turn direction	Altitude (ft)	Speed (kt)	Coordinates	VPA/TCH	Navigation specification	Remarks
001	-	KEVOX	-	-	-	-	+6 000	-230	35°00'51.7"N 128°43'47.2"E	-	RNAV 1	IAF
002	TF	PK711	-	126.82(118.30)	6.3	-	+5 000	-230	34°57'51.9"N 128°50'32.3"E	-	RNAV 1	SDF
003	TF	AKEVI	-	092.58(084.06)	6.0	-	+3 300	-230	34°58'29.0"N 128°57'48.0"E	-	RNAV 1	IF

ILS Z RWY 36L - via AKEVI(IF) to MAHF

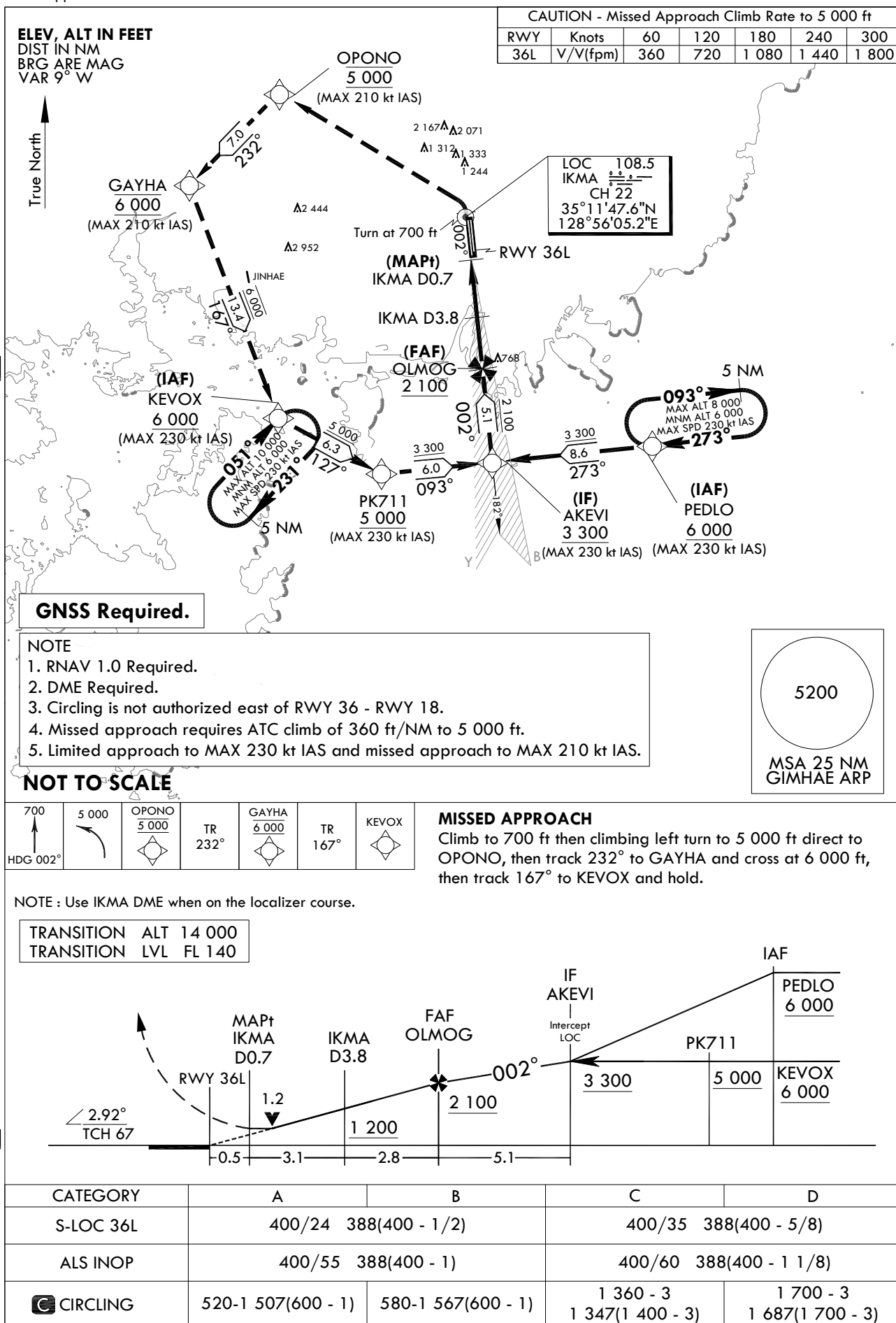
Serial Number	Path Descriptor	Waypoint Identifier	Fly-over	Course/Track °M(°T)	Distance (NM)	Turn direction	Altitude (ft)	Speed (kt)	Coordinates	VPA/TCH	Navigation specification	Remarks
001	TF	AKEVI	-	-	-	-	+3 300	-230	34°58'29.0"N 128°57'48.0"E	-	RNAV 1	IF
002	TF	OLMOG	-	002.49(353.97)	5.1	-	+2 100	-	35°03'32.1"N 128°57'09.1"E	-	-	FAF
003	-	DA	-	002.49(353.97)	-	-	-	-	-	-	LOC	DA
004	-	RWY 36L	-	002.49(353.97)	-	-	-	-	35°09'54.7"N 128°56'19.8"E	3.0/57	LOC	-
005	VA	-	-	002.49(353.97)	-	-	+500	-210	-	-	RNAV 1	CG 370 ft/NM to 5 000 ft
006	DF	OPONO	-	-	-	L	@5 000	-210	35°18'24.2"N 128°43'46.2"E	-	RNAV 1	-
007	TF	GAYHA	-	232.27(223.75)	7.0	-	@6 000	-210	35°13'22.4"N 128°37'54.4"E	-	RNAV 1	-
008	TF	KEVOX	-	167.38(158.86)	13.4	-	+6 000	-230	35°00'51.7"N 128°43'47.2"E	-	RNAV 1	-

HOLDING PROCEDURE

Holding Identification	Path Descriptor	Waypoint Identifier	Fly-over	Course/Track °M(°T)	Distance (NM)	Turn direction	Altitude (ft)	Speed (kt)	Coordinates	VPA/TCH	Navigation specification	Remarks
ILS Z RWY 36L	HM	PEDLO	-	272.59(264.07)	5.0	R	-8 000 +6 000	-230	34°59'23.1"N 129°08'15.3"E	-	RNAV 1	Hold at PEDLO E Right Turn 273° Inbound 5 NM Leg.
	HM	KEVOX	-	051.05(042.53)	5.0	R	-10 000 +6 000	-230	35°00'51.7"N 128°43'47.2"E	-	RNAV 1	Hold at KEVOX SW Right Turn 051° Inbound 5 NM Leg.

INSTRUMENT
APPROACH
CHARTAERODROME ELEV 13 ft
HEIGHTS RELATED TO
THR RWY 36L - ELEV 12 ftGIMHAE APP 125.5 364.0
GIMHAE TWR 118.1 118.45
233.3 236.6BUSAN/Gimhae Intl(RKPK)
LOC Z RWY 36L

Note : Approach and circle to land under U.S. TERPS.



Change : Amended chart symbols.

AERONAUTICAL DATA TABULATION

Instrument Approach Procedure Coding Tables

LOC Z RWY 36L - via PEDLO to AKEVI(If)									
Serial Number	Path Descriptor	Waypoint Identifier	Fly-over	Course/Track °M(°T)	Distance (NM)	Turn direction	Altitude (ft)	Speed (kt)	Coordinates
001	-	PEDLO	-	-	-	-	+6 000	-230	34°59'23.1"N 129°08'15.3"E
002	TF	AKEVI	-	272.59(264.07)	8.6	-	+3 300	-230	34°58'29.0"N 128°57'48.0"E

LOC Z RWY 36L - via KEVOX to AKEVI(If)									
Serial Number	Path Descriptor	Waypoint Identifier	Fly-over	Course/Track °M(°T)	Distance (NM)	Turn direction	Altitude (ft)	Speed (kt)	Coordinates
001	-	KEVOX	-	-	-	-	+6 000	-230	35°00'51.7"N 128°43'47.2"E
002	TF	PK711	-	126.82(118.30)	6.3	-	+5 000	-230	34°57'51.9"N 128°50'32.3"E
003	TF	AKEVI	-	092.58(084.06)	6.0	-	+3 300	-230	34°58'29.0"N 128°57'48.0"E

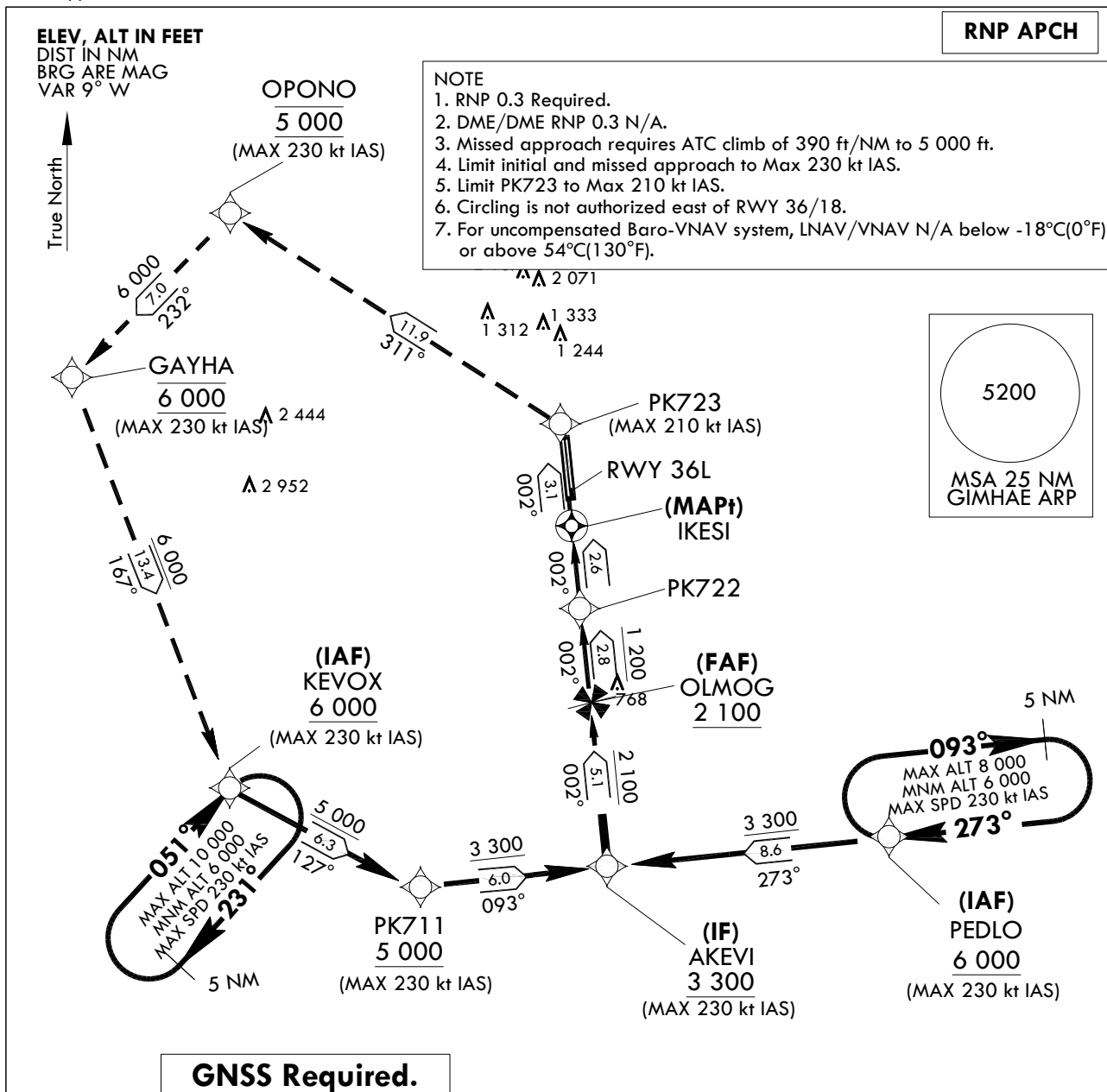
LOC Z RWY 36L - via AKEVI(If) to MAHF									
Serial Number	Path Descriptor	Waypoint Identifier	Fly-over	Course/Track °M(°T)	Distance (NM)	Turn direction	Altitude (ft)	Speed (kt)	Coordinates
001	TF	AKEVI	-	-	-	-	+3 300	-230	34°58'29.0"N 128°57'48.0"E
002	TF	OLMOG	-	002.49(353.97)	5.1	-	+2 100	-	35°03'32.1"N 128°57'09.1"E
003	-	IKMA D3.8	-	002.49(353.97)	2.8	-	+1 200	-	-
004	-	IKMA D0.7	-	002.49(353.97)	3.1	-	+400	-	-
005	-	RWY 36L	-	002.49(353.97)	0.5	-	-	-	35°09'54.7"N 128°56'19.8"E
006	VA	-	-	002.49(353.97)	-	-	+700	-210	-
007	DF	OPONO	-	-	-	L	@5 000	-210	35°18'24.2"N 128°43'46.2"E
008	TF	GAYHA	-	232.27(223.75)	7.0	-	@6 000	-210	35°13'22.4"N 128°37'54.4"E
009	TF	KEVOX	-	167.38(158.86)	13.4	-	+6 000	-230	35°00'51.7"N 128°43'47.2"E

HOLDING PROCEDURE

Holding Identification	Path Descriptor	Waypoint Identifier	Fly-over	Course/Track °M(°T)	Distance (NM)	Turn direction	Altitude (ft)	Speed (kt)	Coordinates	VPA/TCH	Navigation specification	Remarks
LOC Z RWY 36L	HM	PEDLO	-	272.59(264.07)	5.0	R	-8 000 +6 000	-230	34°59'23.1"N 129°08'15.3"E	-	RNAV 1	Hold at PEDLO E Right Turn 273° Inbound 5 NM Leg.
	HM	KEVOX	-	051.05(042.53)	5.0	R	-10 000 +6 000	-230	35°00'51.7"N 128°43'47.2"E	-	RNAV 1	Hold at KEVOX SW Right Turn 051° Inbound 5 NM Leg.

INSTRUMENT
APPROACH
CHARTAERODROME ELEV 13 ft
HEIGHTS RELATED TO
THR RWY 36L - ELEV 12 ftGIMHAE APP 125.5 364.0
GIMHAE TWR 118.1 118.45
233.3 236.6BUSAN/Gimhae Intl(RKPK)
RNP RWY 36L

Note : Approach and circle to land under U.S. TERPS.



NOT TO SCALE

CAUTION - Missed Approach Climb Rate to 5 000 ft

RWY	Knots	60	120	180	240	300
36L	V/V(fpm)	390	780	1 170	1 560	1 950

6 000	PK723	OPONO	GAYHA	KEVOX	MISSED APPROACH Climb to 6 000 ft on track 002° to PK723, then track 311° to cross Opono at 5 000 ft, then track 232° to cross GAYHA at 6 000 ft, then track 167° to KEVOX and hold.	TRANSITION ALT 14 000 TRANSITION LVL FL 140
TR 002°	TR 311°	TR 232°	TR 167°			

NOTE : VGSi and RNAV glidepath not coincident.
(VGSi Angle 3.00° TCH 67)

NOTE : VGSi and RNAV glidepath not coincident. (VGSi Angle 3.00° TCH 67)		MAPt *IKESI *1.0 NM to RWY 36L		*PK722 *3.57 NM to RWY 36L		FAF OLMOG		IF AKEVI		IAF PEDLO	
GS 3.00° TCH 51 ELEV 13		RWY 36L		*1.4 NM to RWY 36L		1 200*		3 300		5 000	
THR RWY 36L		-1.0		-2.57 NM		-2.83 NM		-5.1 NM			
CATEGORY		A		B		C		D			
LNAV/VNAV		FULL		420/45		408(500-7/8)					
		ALS INOP		420-1 3/8		408(500-1 3/8)					
LNAV		FULL		500/45		488(500-7/8)		500/55		488(500-1)	
		ALS INOP		500-1 1/2		488(500-1 1/2)					
CIRCLING		580-1 1/2		567(600-1 1/2)		1 360-3		1 347(1 400-3)		1 700-3	

Change : Amended chart symbol.

AERONAUTICAL DATA TABULATION

Instrument Approach Procedure Coding Tables

RNP RWY 36L - via PEDLO to AKEV(IIF)

Serial Number	Path Descriptor	Waypoint Identifier	Fly-over	Course/Track °M(°T)	Distance (NM)	Turn direction	Altitude (ft)	Speed (kt)	Coordinates	VPA/TCH	Navigation specification	Remarks
001	-	PEDLO	-	-	-	-	+6 000	-230	34°59'23.1"N 129°08'15.3"E	-	RNP APCH	IAF
002	TF	AKEVI	-	272.59(264.07)	8.6	-	+3 300	-230	34°58'29.0"N 128°57'48.0"E	-	RNP APCH	IF

RNP RWY 36L - via KEVOX to AKEV(IIF)

Serial Number	Path Descriptor	Waypoint Identifier	Fly-over	Course/Track °M(°T)	Distance (NM)	Turn direction	Altitude (ft)	Speed (kt)	Coordinates	VPA/TCH	Navigation specification	Remarks
001	-	KEVOX	-	-	-	-	+6 000	-230	35°00'51.7"N 128°43'47.2"E	-	RNP APCH	IAF
002	TF	PK711	-	126.82(118.30)	6.3	-	+5 000	-230	34°57'51.9"N 128°50'32.3"E	-	RNP APCH	SDF
003	TF	AKEVI	-	092.58(084.06)	6.0	-	+3 300	-230	34°58'29.0"N 128°57'48.0"E	-	RNP APCH	IF

RNP RWY 36L - via AKEV(IIF) to MAHF

Serial Number	Path Descriptor	Waypoint Identifier	Fly-over	Course/Track °M(°T)	Distance (NM)	Turn direction	Altitude (ft)	Speed (kt)	Coordinates	VPA/TCH	Navigation specification	Remarks
001	TF	AKEVI	-	-	-	-	+3 300	-230	34°58'29.0"N 128°57'48.0"E	-	RNP APCH	IF
002	TF	OLMOG	-	002.49(353.97)	5.1	-	+2 100	-	35°03'32.1"N 128°57'09.1"E	-	RNP APCH	FAF
003	TF	PK722	-	002.48(353.96)	2.83	-	+1 200	-	35°06'21.1"N 128°56'47.3"E	-	RNP APCH	SDF
004	TF	IKESI	Y	002.48(353.96)	2.57	-	+500	-	35°08'54.9"N 128°56'27.5"E	-	RNP APCH	MAPI
005	TF	PK723	-	002.47(353.95)	3.08	-	-	-210	35°11'59.2"N 128°56'03.7"E	-	RNP APCH	CG 390 ft/NM to 5 000 ft
006	TF	OPONO	-	311.05(302.53)	11.9	-	@5 000	-230	35°18'24.2"N 128°43'46.2"E	-	RNP APCH	CG 390 ft/NM to 5 000 ft
007	TF	GAYHA	-	232.27(223.75)	7.0	-	@6 000	-230	35°13'22.4"N 128°37'54.4"E	-	RNP APCH	-
008	TF	KEVOX	-	167.38(158.86)	13.4	-	+6 000	-230	35°00'51.7"N 128°43'47.2"E	-	RNP APCH	-

HOLDING PROCEDURE

Holding Identification	Path Descriptor	Waypoint Identifier	Fly-over	Course/Track °M(°T)	Distance (NM)	Turn direction	Altitude (ft)	Speed (kt)	Coordinates	VPA/TCH	Navigation specification	Remarks
RNP RWY 36L	HM	PEDLO	-	272.59(264.07)	5.0	R	-8 000 +6 000	-230	34°59'23.1"N 129°08'15.3"E	-	RNAV 1	Hold at PEDLO E Right Turn 273° Inbound 5 NM Leg.
		KEVOX	-	051.05(042.53)	5.0	R	-10 000 +6 000	-230	35°00'51.7"N 128°43'47.2"E	-	RNAV 1	Hold at KEVOX SW Right Turn 051° Inbound 5 NM Leg.

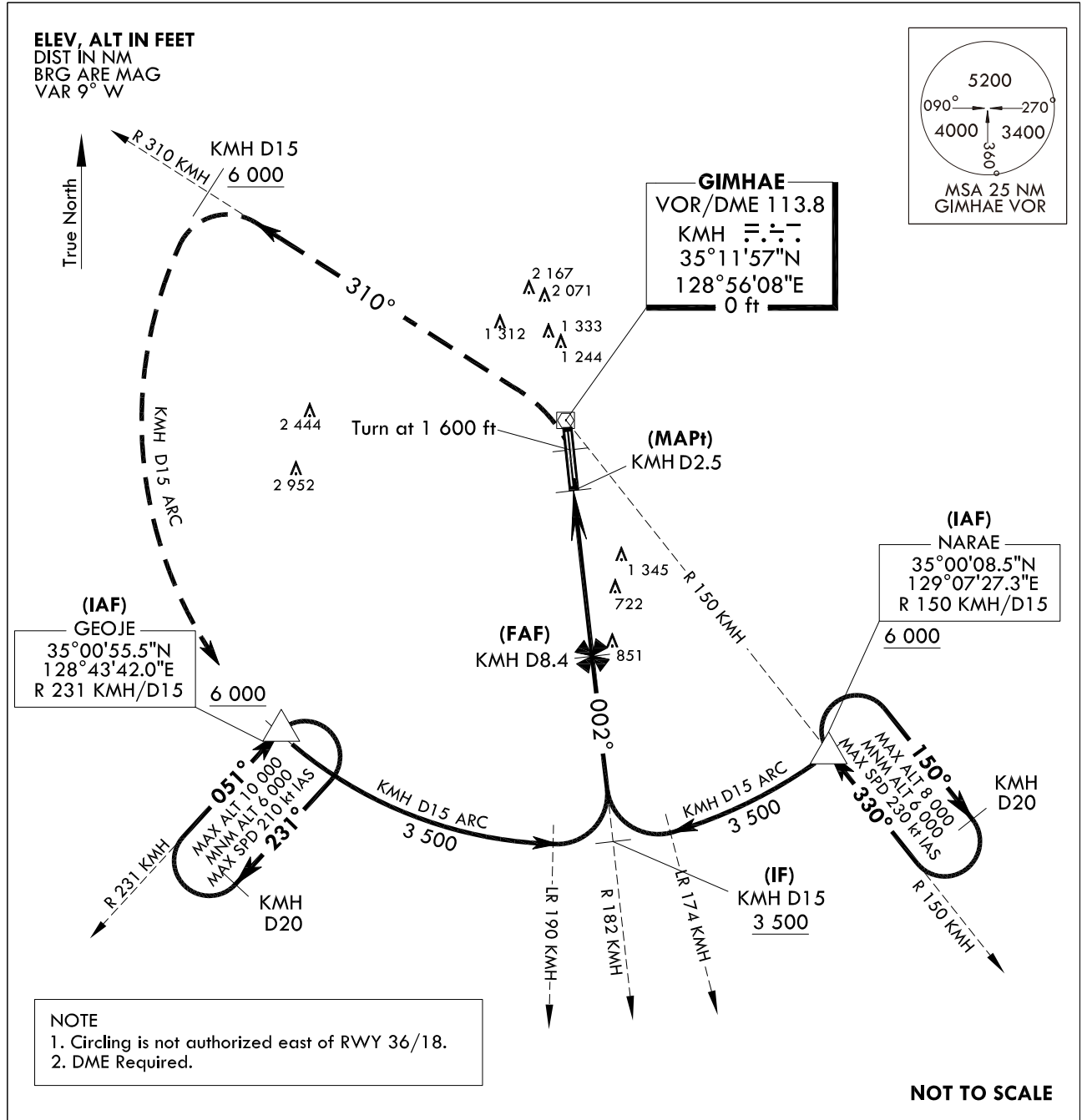
**INSTRUMENT
APPROACH
CHART**

AERODROME ELEV 13 ft
HEIGHTS RELATED TO
THR RWY 36L - ELEV 12 ft

GIMHAE APP 125.5 364.0
GIMHAE TWR 118.1 118.45
233.3 236.6

BUSAN/Gimhae Intl(RKPK)
VOR
RWY 36L

Note : Approach and circle to land under U.S. TERPS.



1 600 ↑ HDG 002°	6 000 R 310 KMH	KMH D15	KMH D15 ARC	GEOJE △	MISSED APPROACH Climb to 1 600 ft then left turn climbing 6 000 ft on R 310 KMH to 15 DME, then arc KMH D15 to GEOJE and hold.																					
TRANSITION ALT 14 000 TRANSITION LVL FL 140																										
<table><tr><td colspan="2">CATEGORY</td><td>A</td><td>B</td><td>C</td><td>D</td></tr><tr><td rowspan="2">S-VOR 36L</td><td>FULL</td><td>1 460/40 1 448(1 500-3/4)</td><td>1 460/55 1 448(1 500-1)</td><td rowspan="2">1 460-3 1 448(1 500-3)</td><td rowspan="2">1 448(1 500-3)</td></tr><tr><td>ALS INOP</td><td>1 460/60 1 448(1 500-1 1/4)</td><td>1 460-1 1/2 1 448(1 500-1 1/2)</td></tr><tr><td colspan="2">CIRCLING</td><td>1 460-1 1/4 1 447(1 500-1 1/4)</td><td>1 460-1 1/2 1 447(1 500-1 1/2)</td><td>1 460-3 1 447(1 500-3)</td><td>1 700-3 1 687(1 700-3)</td></tr></table>						CATEGORY		A	B	C	D	S-VOR 36L	FULL	1 460/40 1 448(1 500-3/4)	1 460/55 1 448(1 500-1)	1 460-3 1 448(1 500-3)	1 448(1 500-3)	ALS INOP	1 460/60 1 448(1 500-1 1/4)	1 460-1 1/2 1 448(1 500-1 1/2)	CIRCLING		1 460-1 1/4 1 447(1 500-1 1/4)	1 460-1 1/2 1 447(1 500-1 1/2)	1 460-3 1 447(1 500-3)	1 700-3 1 687(1 700-3)
CATEGORY		A	B	C	D																					
S-VOR 36L	FULL	1 460/40 1 448(1 500-3/4)	1 460/55 1 448(1 500-1)	1 460-3 1 448(1 500-3)	1 448(1 500-3)																					
	ALS INOP	1 460/60 1 448(1 500-1 1/4)	1 460-1 1/2 1 448(1 500-1 1/2)																							
CIRCLING		1 460-1 1/4 1 447(1 500-1 1/4)	1 460-1 1/2 1 447(1 500-1 1/2)	1 460-3 1 447(1 500-3)	1 700-3 1 687(1 700-3)																					

Change : Amended chart symbol.

INTENTIONALLY

LEFT

BLANK

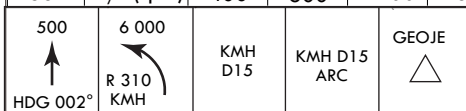
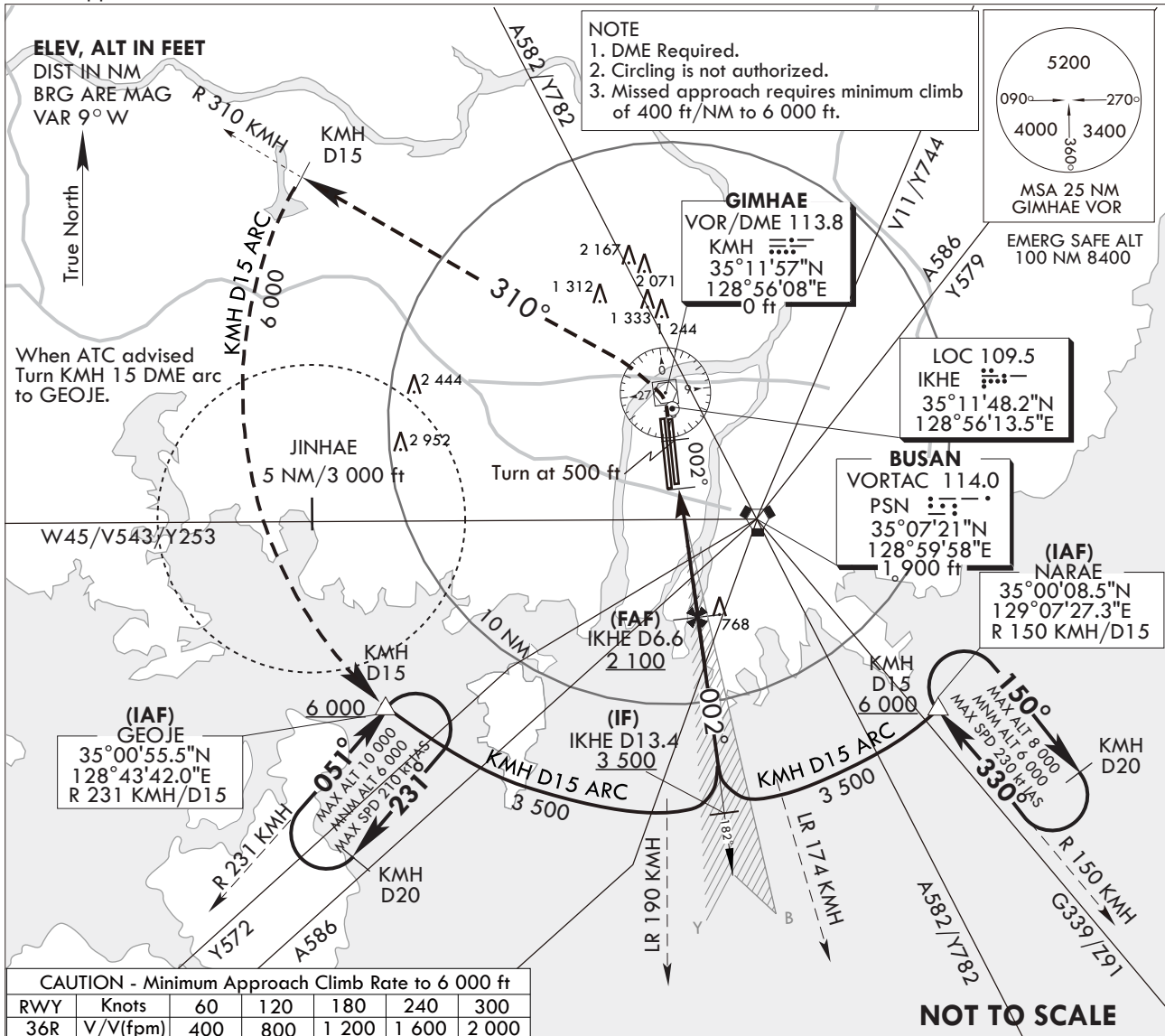
**INSTRUMENT
APPROACH
CHART**

AERODROME ELEV 13 ft
HEIGHTS RELATED TO
RWY 36R ELEV TDZ 8 ft

GIMHAE APP	125.5	364.0
GIMHAE TWR	118.1	118.450
	233.3	236.6

BUSAN/Gimhae Intl(RKPK)
ILS Y RWY 36R

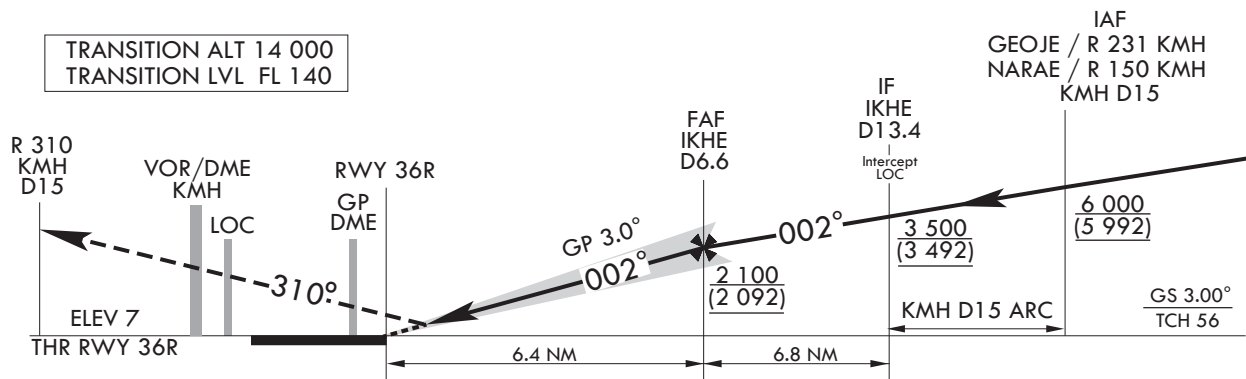
Note : Approach and circle to land under U.S. TERPS.



MISSED APPROACH

Climb to 500 ft then climbing left turn to 6 000 ft on R 310 KMH to 15 DME and at or above 6 000 ft, then arc KMH D15 to GEOJE and hold.

TRANSITION ALT 14 000
TRANSITION LVL FL 140



CATEGORY	A	B	C	D
S-ILS 36R	208/18 200 (200-1/2)		208/24* 200 (200-1/2) *Use civil only RVR 18	
	When TDZ/CL LGT INOP, increase RVR to 24			
ALS INOP	208/40 200 (200-3/4)			

NOTE

1. Use IKHE DME when on the localizer course.
2. VGSI and ILS glidepath not coincident. (VGSI Angle 3.00° TCH 75)

Change : Amended chart symbol.

INTENTIONALLY

LEFT

BLANK

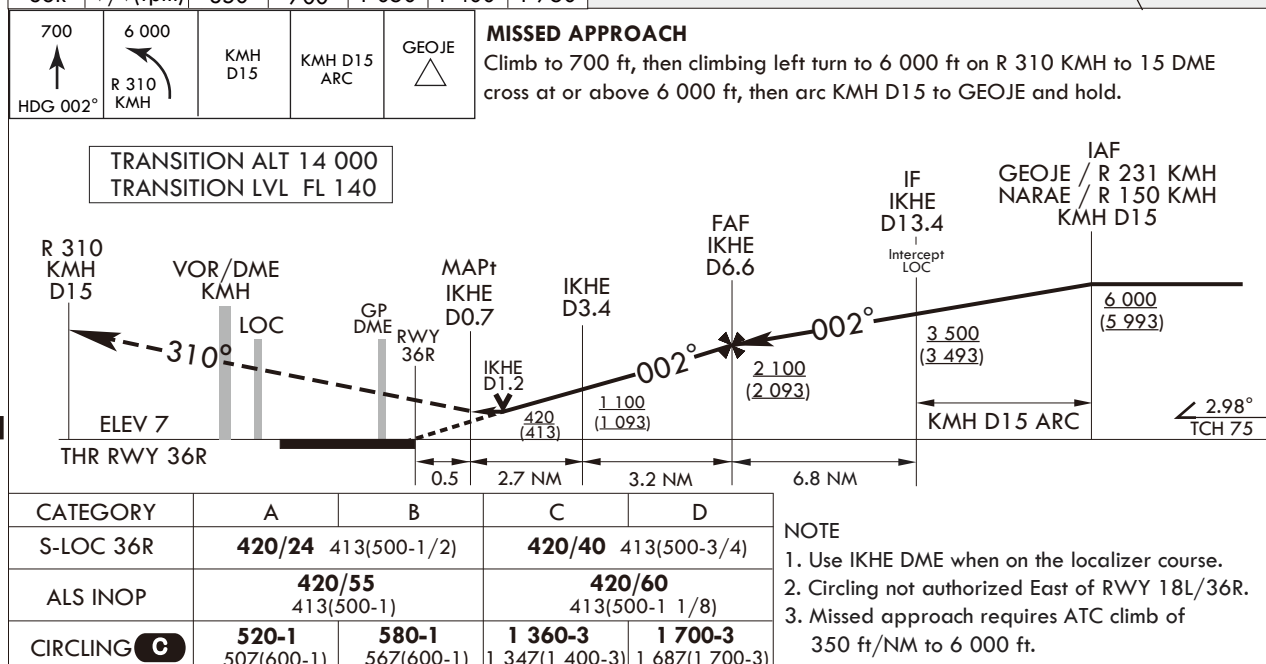
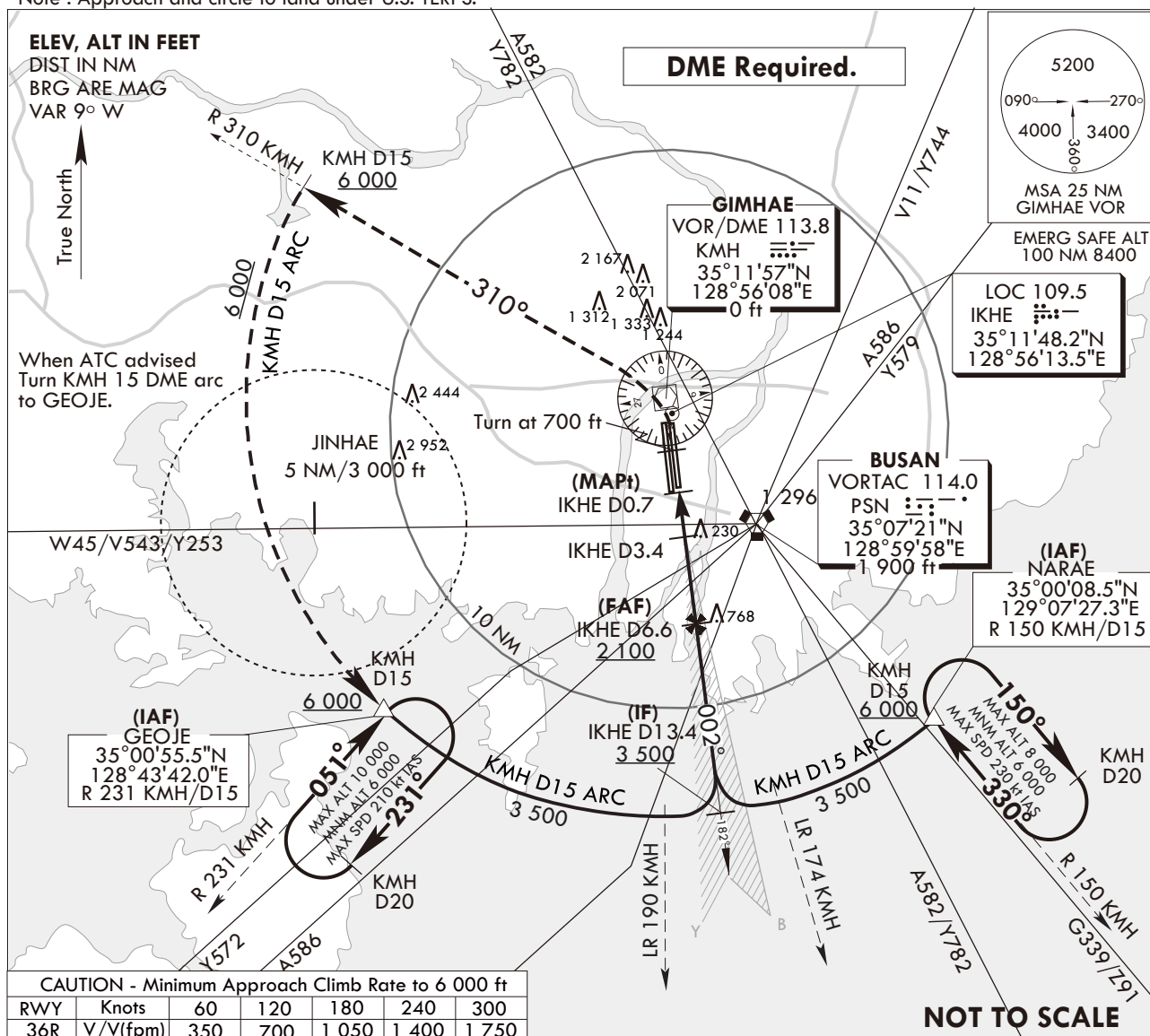
**INSTRUMENT
APPROACH
CHART**

AERODROME ELEV 13 ft
HEIGHTS RELATED TO
THR RWY 36R - ELEV 7 ft

GIMHAE APP	125.5	364.0
GIMHAE TWR	118.1	118.450
	233.3	236.6

BUSAN/Gimhae Intl(RKPK)
LOC Y RWY 36R

Note : Approach and circle to land under U.S. TERPS.



Change : Amended chart symbol.

INTENTIONALLY

LEFT

BLANK

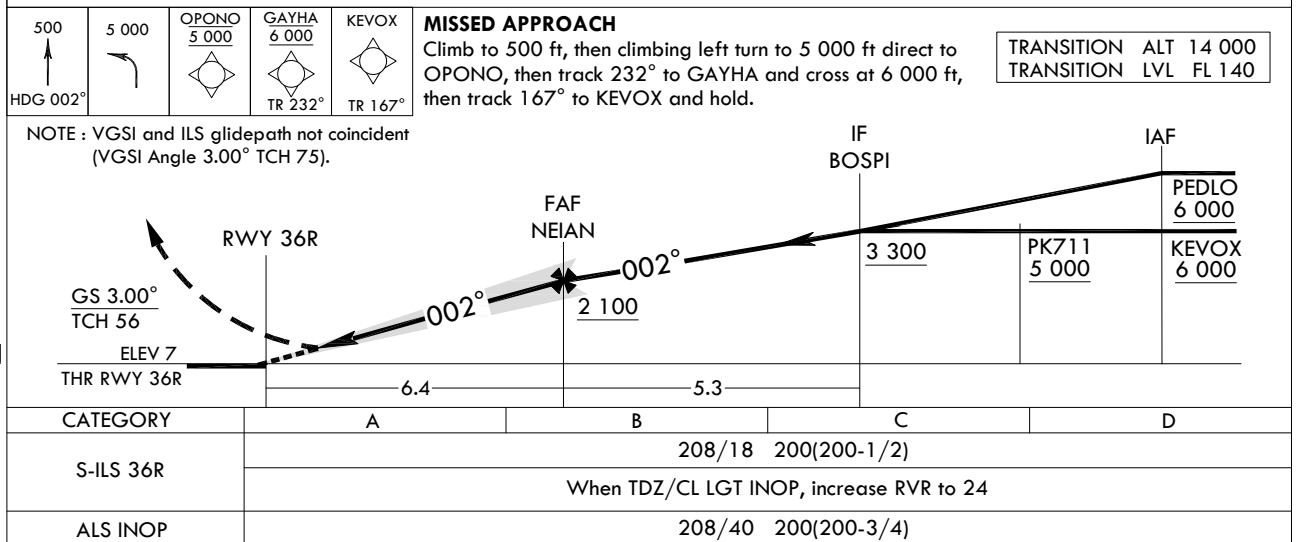
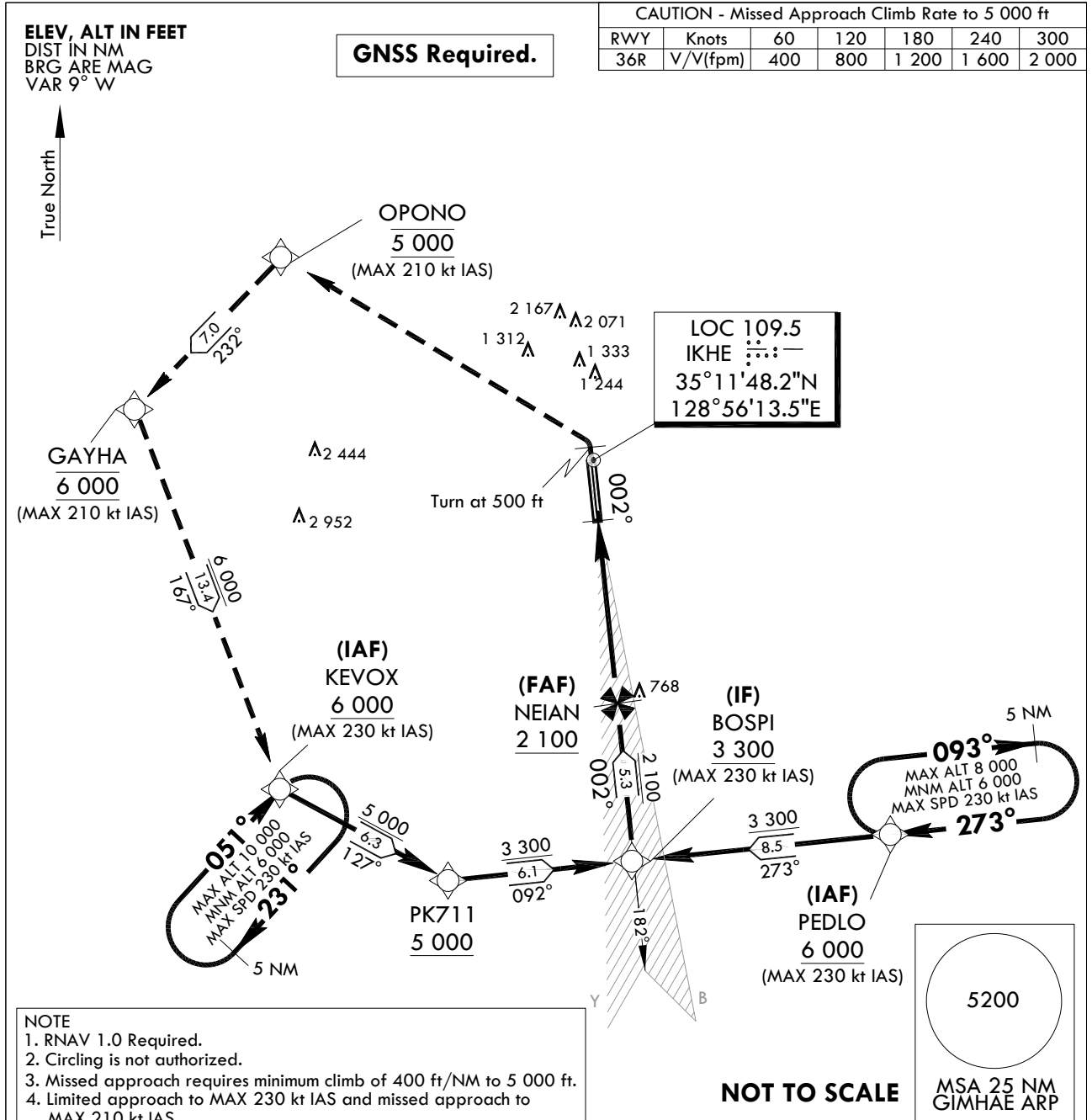
**INSTRUMENT
APPROACH
CHART**

AERODROME ELEV 13 ft
HEIGHTS RELATED TO
RWY 36R ELEV TDZ 8 ft

GIMHAE APP 125.5 364.0
GIMHAE TWR 118.1 118.45
233.3 236.6

BUSAN/Gimhae Intl(RKPK)
ILS Z RWY 36R

Note : Approach and circle to land under U.S. TERPS.



Change : Amended chart symbol.

AERONAUTICAL DATA TABULATION

Instrument Approach Procedure Coding Tables

ILS Z RWY 36R - via PEDLO to BOSPI(IF)

Serial Number	Path Descriptor	Waypoint Identifier	Fly-over	Course/Track °M(T)	Distance (NM)	Turn direction	Altitude (ft)	Speed (kt)	Coordinates	VPA/TCH	Navigation specification	Remarks
001	-	PEDLO	-	-	-	-	+6 000	-230	34°59'23.1"N 129°08'15.3"E	-	RNAV 1	IAF
002	TF	BOSPI	-	272.75(264.23)	8.5	-	+3 300	-230	34°58'31.2"N 128°57'56.1"E	-	RNAV 1	IF

ILS Z RWY 36R - via KEVOX to BOSPI(IF)

Serial Number	Path Descriptor	Waypoint Identifier	Fly-over	Course/Track °M(T)	Distance (NM)	Turn direction	Altitude (ft)	Speed (kt)	Coordinates	VPA/TCH	Navigation specification	Remarks
001	-	KEVOX	-	-	-	-	+6 000	-230	35°00'51.7"N 128°43'47.2"E	-	RNAV 1	IAF
002	TF	PK711	-	126.82(118.30)	6.3	-	+5 000	-230	34°57'51.9"N 128°50'32.3"E	-	RNAV 1	SDF
003	TF	BOSPI	-	092.35(083.83)	6.1	-	+3 300	-230	34°58'31.2"N 128°57'56.1"E	-	RNAV 1	IF

ILS Z RWY 36R - via BOSPI(IF) to MAHF

Serial Number	Path Descriptor	Waypoint Identifier	Fly-over	Course/Track °M(T)	Distance (NM)	Turn direction	Altitude (ft)	Speed (kt)	Coordinates	VPA/TCH	Navigation specification	Remarks
001	TF	BOSPI	-	-	-	-	+3 300	-230	34°58'31.2"N 128°57'56.1"E	-	RNAV 1	IF
002	TF	NEIAN	-	002.49(353.97)	5.3	-	+2 100	-	35°03'46.6"N 128°57'15.5"E	-	-	FAF
003	-	DA	-	002.48(353.96)	-	-	+208	-	-	-	LOC	DA
004	-	RWY 36R	-	002.48(353.96)	-	-	-	-	35°10'10.10"N 128°56'26.14"E	3.0/56	LOC	-
005	VA	-	-	002.48(353.96)	-	-	+500	-	-	-	-	CG 400 ft/NM to 5 000 ft
006	DF	OPONO	-	-	-	L	@5 000	-210	35°18'24.2"N 128°43'46.2"E	-	RNAV 1	CG 400 ft/NM to 5 000 ft
007	TF	GAYHA	-	232.27(223.75)	7.0	-	@6 000	-210	35°13'22.4"N 128°37'54.4"E	-	RNAV 1	-
008	TF	KEVOX	-	167.38(158.86)	13.4	-	+6 000	-230	35°00'51.7"N 128°43'47.2"E	-	RNAV 1	-

HOLDING PROCEDURE

Holding Identification	Path Descriptor	Waypoint Identifier	Fly-over	Course/Track °M(T)	Distance (NM)	Turn direction	Altitude (ft)	Speed (kt)	Coordinates	VPA/TCH	Navigation specification	Remarks
ILS Z RWY 36R	HM	PEDLO	-	272.59(264.07)	5.0	R	-8 000 +6 000	-230	34°59'23.1"N 129°08'15.3"E	-	RNAV 1	Hold at PEDLO E Right Turn 273° Inbound 5 NM Leg.
	HM	KEVOX	-	051.05(042.53)	5.0	R	-10 000 +6 000	-230	35°00'51.7"N 128°43'47.2"E	-	RNAV 1	Hold at KEVOX SW Right Turn 051° Inbound 5 NM Leg.

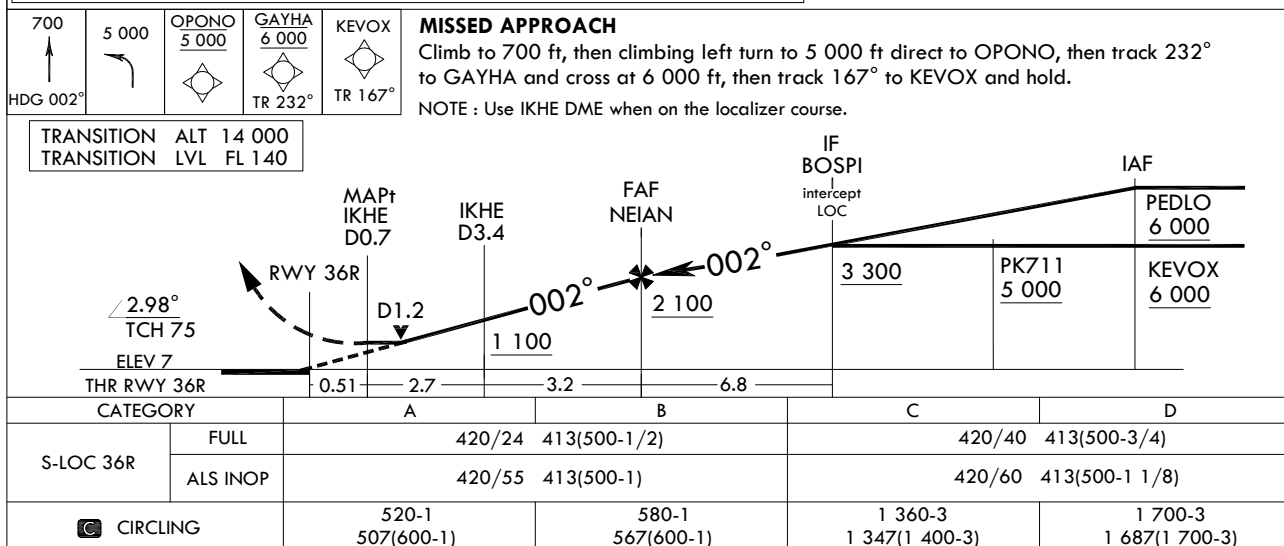
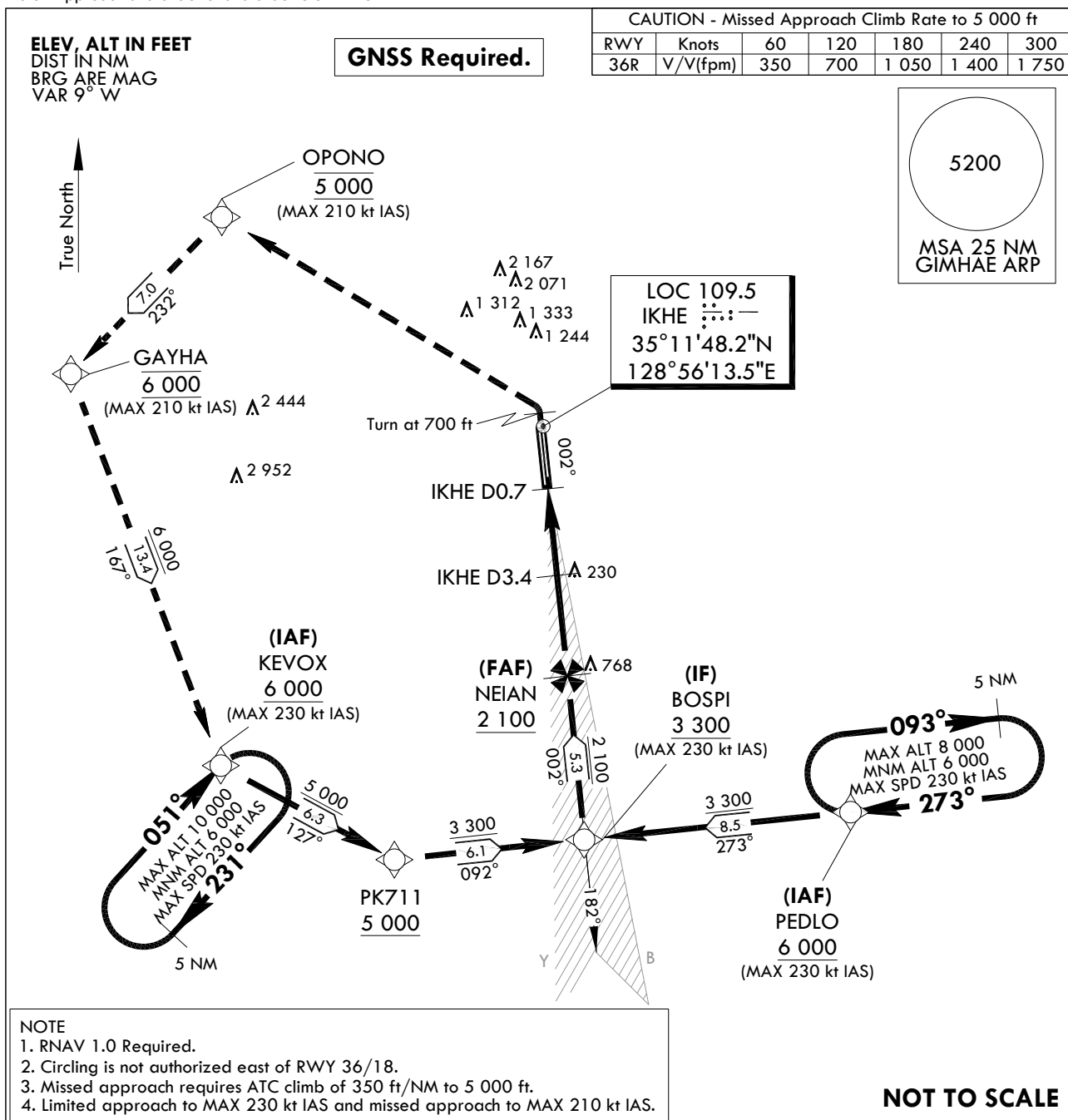
**INSTRUMENT
APPROACH
CHART**

AERODROME ELEV 13 ft
HEIGHTS RELATED TO
THR RWY 36R - ELEV 7 ft

GIMHAE APP 125.5 364.0
GIMHAE TWR 118.1 118.45
233.3 236.6

BUSAN/Gimhae Intl(RKPK)
LOC Z RWY 36R

Note : Approach and circle to land under U.S. TERPS.



Change : Amended chart symbol.

AERONAUTICAL DATA TABULATION

Instrument Approach Procedure Coding Tables

LOC Z RWY 36R - via PEDLO to BOSPI(IF)

Serial Number	Path Descriptor	Waypoint Identifier	Fly-over	Course/Track °M(°T)	Distance (NM)	Turn direction	Altitude (ft)	Speed (kt)	Coordinates	VPA/TCH	Navigation specification	Remarks
001	-	PEDLO	-	-	-	-	+6 000	-230	34°59'23.1"N 129°08'15.3"E	-	RNAV 1	IAF
002	TF	BOSPI	-	272.75(264.23)	8.5	-	+3 300	-230	34°58'31.2"N 128°57'56.1"E	-	RNAV 1	IF

LOC Z RWY 36R - via KEVOX to BOSPI(IF)

Serial Number	Path Descriptor	Waypoint Identifier	Fly-over	Course/Track °M(°T)	Distance (NM)	Turn direction	Altitude (ft)	Speed (kt)	Coordinates	VPA/TCH	Navigation specification	Remarks
001	-	KEVOX	-	-	-	-	+6 000	-230	35°00'51.7"N 128°43'47.2"E	-	RNAV 1	IAF
002	TF	PK711	-	126.82(118.30)	6.3	-	+5 000	-230	34°57'51.9"N 128°50'32.3"E	-	RNAV 1	SDF
003	TF	BOSPI	-	092.35(083.83)	6.1	-	+3 300	-230	34°58'31.2"N 128°57'56.1"E	-	RNAV 1	IF

LOC Z RWY 36R - via BOSPI(IF) to MAHF

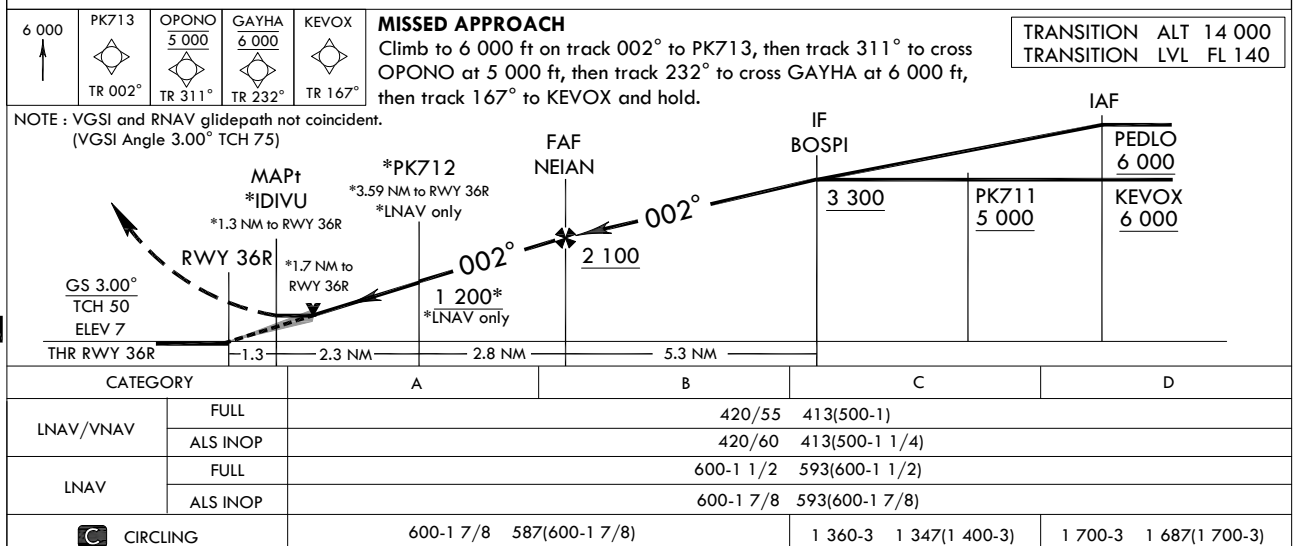
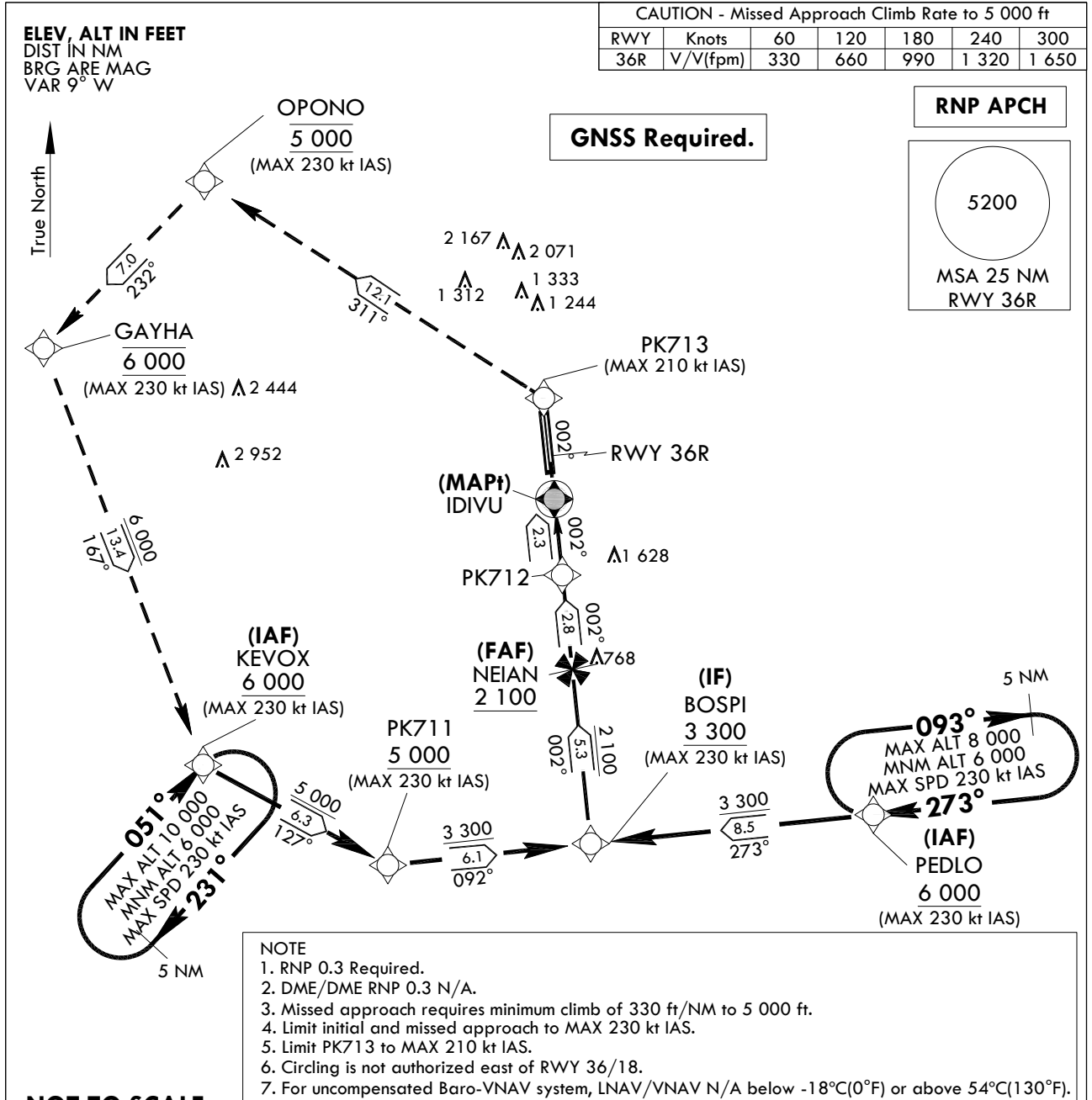
Serial Number	Path Descriptor	Waypoint Identifier	Fly-over	Course/Track °M(°T)	Distance (NM)	Turn direction	Altitude (ft)	Speed (kt)	Coordinates	VPA/TCH	Navigation specification	Remarks
001	TF	BOSPI	-	-	-	-	+3 300	-230	34°58'31.2"N 128°57'56.1"E	-	RNAV 1	IF
002	TF	NEIAN	-	002.49(353.97)	5.3	-	+2 100	-	35°03'46.6"N 128°57'15.5"E	-	LOC	FAF
003	-	IKHE D3.4	-	002.48(353.96)	3.2	-	+1 100	-	35°06'57.8"N 128°56'50.9"E	-	LOC	SDF
004	-	IKHE D0.7	-	002.48(353.96)	2.7	-	+420	-	35°09'39.4"N 128°56'30.1"E	-	LOC	MAPt
005	-	RWY 36R	-	002.48(353.96)	0.51	-	-	-	35°10'10.10"N 128°56'26.14"E	2.98/75	LOC	-
006	VA	-	-	002.48(353.96)	-	-	+700	-	-	-	-	CG 350 ft/NM to 5 000 ft
007	DF	OPONO	-	-	-	L	@5 000	-210	35°18'24.2"N 128°43'46.2"E	-	RNAV 1	CG 350 ft/NM to 5 000 ft
008	TF	GAYHA	-	232.27(223.75)	7.0	-	@6 000	-210	35°13'22.4"N 128°37'54.4"E	-	RNAV 1	-
009	TF	KEVOX	-	167.38(158.86)	13.4	-	+6 000	-230	35°00'51.7"N 128°43'47.2"E	-	RNAV 1	-

HOLDING PROCEDURE

Holding Identification	Path Descriptor	Waypoint Identifier	Fly-over	Course/Track °M(°T)	Distance (NM)	Turn direction	Altitude (ft)	Speed (kt)	Coordinates	VPA/TCH	Navigation specification	Remarks
LOC Z RWY 36R	HM	PEDLO	-	272.59(264.07)	5.0	R	-8 000 +6 000	-230	34°59'23.1"N 129°08'15.3"E	-	RNAV 1	Hold at PEDLO E Right Turn 273° Inbound 5 NM Leg.
	HM	KEVOX	-	051.05(042.53)	5.0	R	-10 000 +6 000	-230	35°00'51.7"N 128°43'47.2"E	-	RNAV 1	Hold at KEVOX SW Right Turn 051° Inbound 5 NM Leg.

INSTRUMENT
APPROACH
CHARTAERODROME ELEV 13 ft
HEIGHTS RELATED TO
THR RWY 36R - ELEV 7 ftGIMHAE APP 125.5 364.0
GIMHAE TWR 118.1 118.45
233.3 236.6BUSAN/Gimhae Intl(RKPK)
RNP RWY 36R

Note : Approach and circle to land under U.S. TERPS.



Change : Amended chart symbol.

AERONAUTICAL DATA TABULATION

Instrument Approach Procedure Coding Tables

RNP RWY 36R - via PEDLO to BOSPI(IF)

Serial Number	Path Descriptor	Waypoint Identifier	Fly-over	Course/Track °M(°T)	Distance (NM)	Turn direction	Altitude (ft)	Speed (kt)	Coordinates	VPA/TCH	Navigation specification	Remarks
001	-	PEDLO	-	-	-	-	+6 000	-230	34°59'23.1"N 129°08'15.3"E	-	RNP APCH	IAF
002	TF	BOSPI	-	272.75(264.23)	8.5	-	+3 300	-230	34°58'31.2"N 128°57'56.1"E	-	RNP APCH	IF

RNP RWY 36R - via KEVOX to BOSPI(IF)

Serial Number	Path Descriptor	Waypoint Identifier	Fly-over	Course/Track °M(°T)	Distance (NM)	Turn direction	Altitude (ft)	Speed (kt)	Coordinates	VPA/TCH	Navigation specification	Remarks
001	-	KEVOX	-	-	-	-	+6 000	-230	35°00'51.7"N 128°43'47.2"E	-	RNP APCH	IAF
002	TF	PK711	-	126.82(118.30)	6.3	-	+5 000	-230	34°57'51.9"N 128°50'32.3"E	-	RNP APCH	SDF
003	TF	BOSPI	-	092.35(083.83)	6.1	-	+3 300	-230	34°58'31.2"N 128°57'56.1"E	-	RNP APCH	IF

RNP RWY 36R - via BOSPI(IF) to MAHF

Serial Number	Path Descriptor	Waypoint Identifier	Fly-over	Course/Track °M(°T)	Distance (NM)	Turn direction	Altitude (ft)	Speed (kt)	Coordinates	VPA/TCH	Navigation specification	Remarks
001	TF	BOSPI	-	-	-	-	+3 300	-230	34°58'31.2"N 128°57'56.1"E	-	RNP APCH	IF
002	TF	NEIAN	-	002.49(353.97)	5.3	-	+2 100	-	35°03'46.6"N 128°57'15.5"E	-	RNP APCH	FAF
003	TF	PK712	-	002.48(353.96)	2.8	-	+1 200	-	35°06'35.6"N 128°56'53.8"E	-	RNP APCH	SDF
004	TF	IDIVU	Y	002.48(353.96)	2.3	-	+600	-	35°08'52.4"N 128°56'36.2"E	-	RNP APCH	MAPt
005	TF	PK713	-	002.51(353.99)	3.1	-	-	-210	35°11'54.5"N 128°56'12.8"E	-	RNP APCH	CG 330 ft/NM to 5 000 ft
006	TF	OPONO	-	311.05(302.53)	12.1	-	@5 000	-230	35°18'24.2"N 128°43'46.2"E	-	RNP APCH	CG 330 ft/NM to 5 000 ft
007	TF	GAYHA	-	232.27(223.75)	7.0	-	@6 000	-230	35°13'22.4"N 128°37'54.4"E	-	RNP APCH	-
008	TF	KEVOX	-	167.38(158.86)	13.4	-	+6 000	-230	35°00'51.7"N 128°43'47.2"E	-	RNP APCH	-

HOLDING PROCEDURE

Holding Identification	Path Descriptor	Waypoint Identifier	Fly-over	Course/Track °M(°T)	Distance (NM)	Turn direction	Altitude (ft)	Speed (kt)	Coordinates	VPA/TCH	Navigation specification	Remarks
RNP RWY 36R	HM	PEDLO	-	272.59(264.07)	5.0	R	-8 000 +6 000	-230	34°59'23.1"N 129°08'15.3"E	-	RNAV 1	Hold at PEDLO E Right Turn 273° Inbound 5 NM Leg.
	HM	KEVOX	-	051.05(042.53)	5.0	R	-10 000 +6 000	-230	35°00'51.7"N 128°43'47.2"E	-	RNAV 1	Hold at KEVOX SW Right Turn 051° Inbound 5 NM Leg.

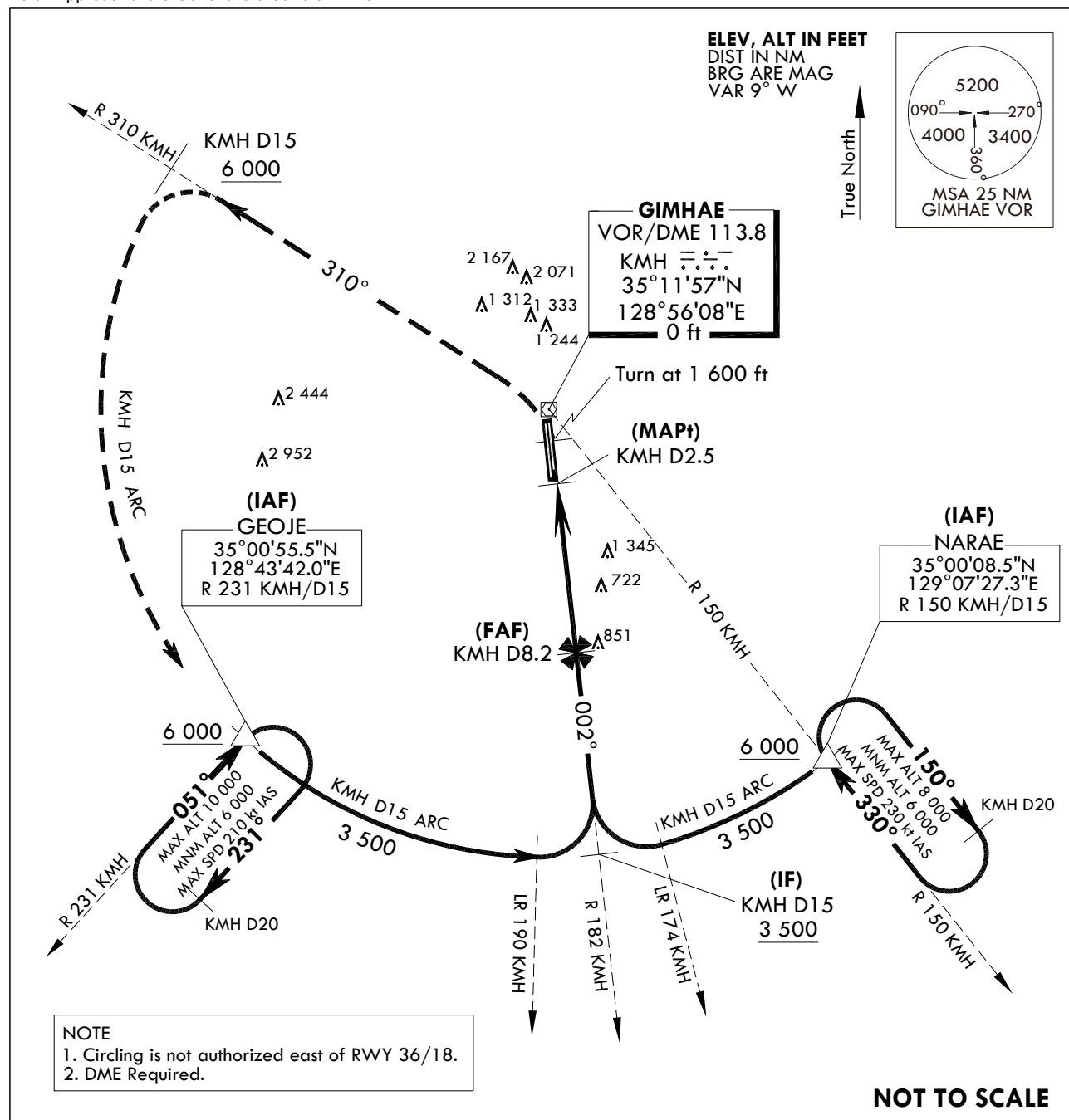
**INSTRUMENT
APPROACH
CHART**

AERODROME ELEV 13 ft
HEIGHTS RELATED TO
THR RWY 36R - ELEV 7 ft

GIMHAE APP 125.5 364.0
GIMHAE TWR 118.1 118.45
233.3 236.6

BUSAN/Gimhae Intl(RKPK)
VOR
RWY 36R

Note : Approach and circle to land under U.S. TERPS.



1 600

↑

HDG 002°

6 000

↶

R 310
KM/H

KM/H

D15

KM/H D15

ARC

GEOJE

△

MISSED APPROACH

Climb to 1 600 ft then left turn climbing 6 000 ft on R 310 KM/H to 15 DME, then arc KM/H D15 to GEOJE and hold.

TRANSITION ALT 14 000

TRANSITION LVL FL 140

THR RWY 36R

2.97°

TCH 75

ELEV 7

VOR

MAPt

KM/H D2.5

RWY 36R

FAF

KM/H D8.2

KM/H D6.1

2 100

IF

R 182

KM/H D15

3 500

KM/H D15 ARC

IAF

GEOJE / R 231 KM/H

NARAE / R 150 KM/H

KM/H D15

6 000

CATEGORY		A	B	C	D
S-VOR 36R	FULL	1 460/40 1 453(1 500 - 3/4)	1 460/55 1 453(1 500 - 1)	1 460 - 3	1 453(1 500 - 3)
	ALS INOP	1 460/60 1 453(1 500 - 1 1/4)	1 460 - 1 1/2 1 453(1 500 - 1 1/2)		
CIRCLING		1 460 - 1 1/4 1 447(1 500 - 1 1/4)	1 460 - 1 1/2 1 447(1 500 - 1 1/2)	1 460 - 3 1 447(1 500 - 3)	1 700 - 3 1 687(1 700 - 3)

Change : Amended chart symbol.

INTENTIONALLY

LEFT

BLANK

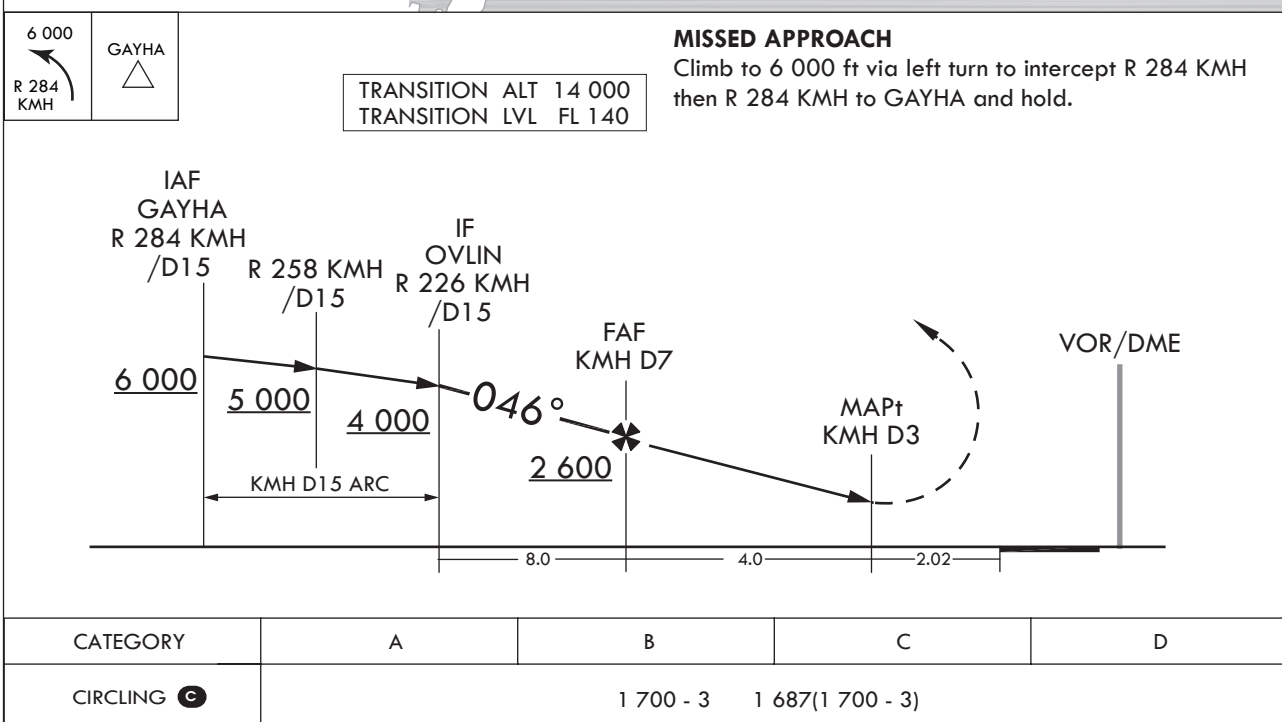
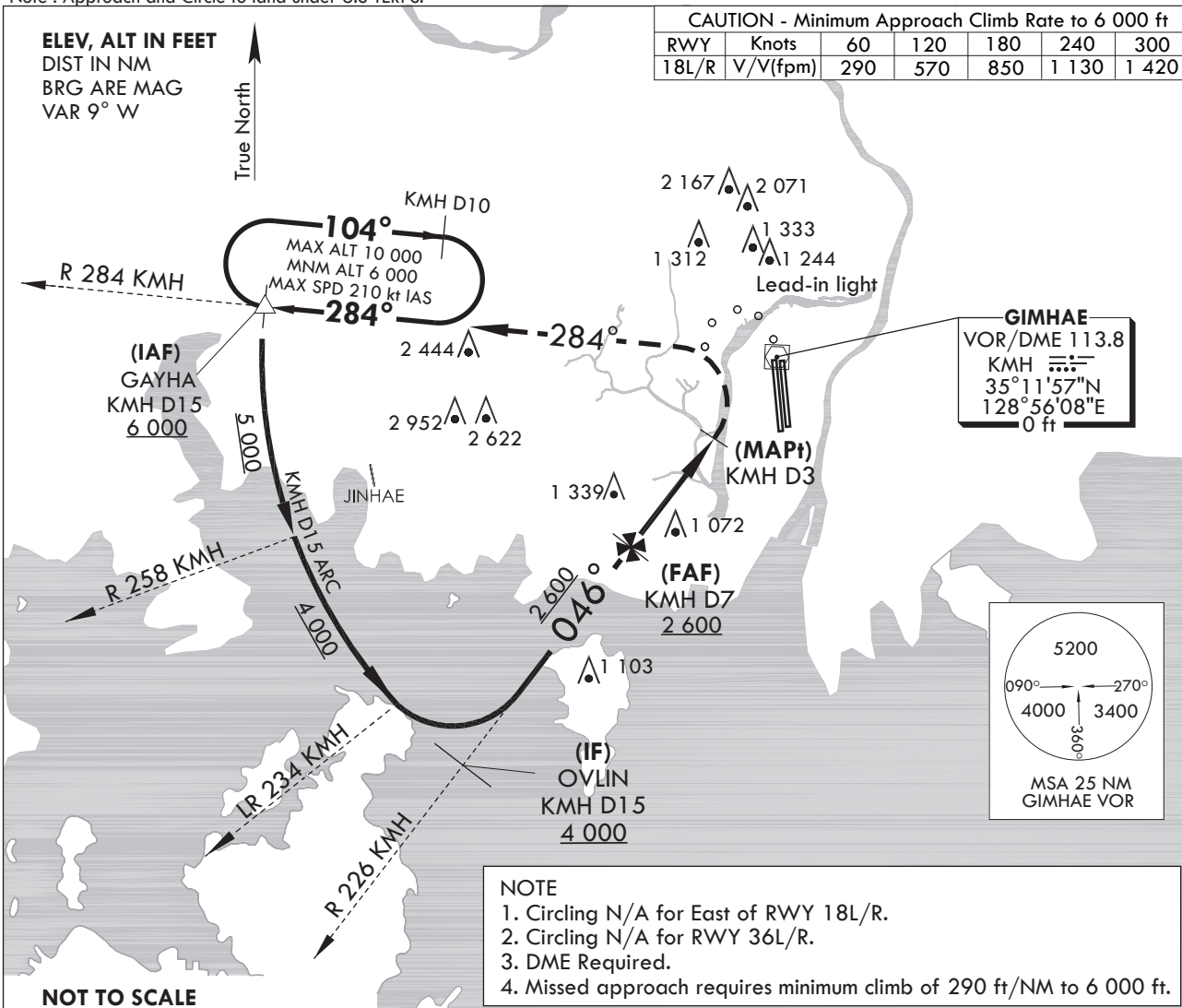
**INSTRUMENT
APPROACH
CHART**

AERODROME ELEV 13 ft
HEIGHTS RELATED TO
THR RWY 18L - ELEV 8 ft
THR RWY 18R - ELEV 13 ft

GIMHAE APP 125.5 364.0
GIMHAE TWR 118.1 233.3
118.450 236.6

BUSAN/Gimhae Intl(RKPK)
VOR - A
RWY 18L/R

Note : Approach and Circle to land under U.S TERPS.



Change : Information of procedure name(VOR/DME - A → VOR - A).

INTENTIONALLY

LEFT

BLANK

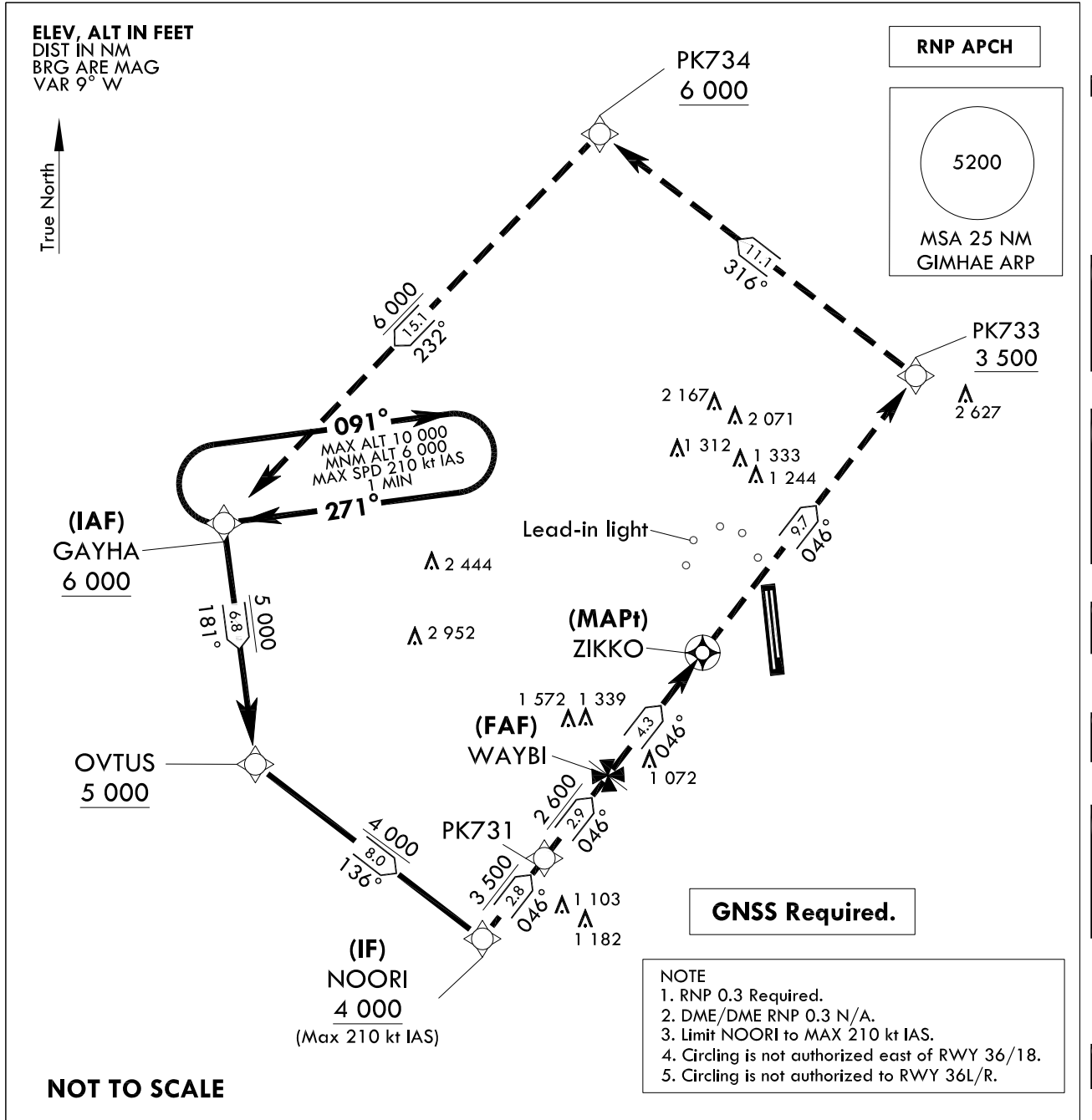
**INSTRUMENT
APPROACH
CHART**

AERODROME ELEV 13 ft

GIMHAE APP 125.5 364.0
GIMHAE TWR 118.1 118.45
233.3 236.6

**BUSAN/Gimhae Intl(RKPK)
RNP B RWY 18L/R**

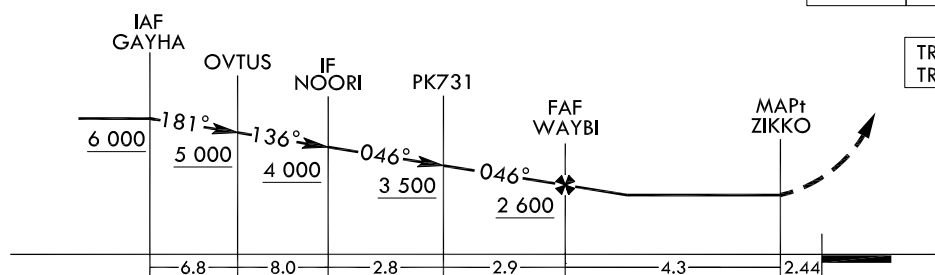
Note : Approach and circle to land under U.S. TERPS.



MISSED APPROACH

Climb to 6 000 ft via track 046° to cross PK733 at or above 3 500 ft, then track 316° to cross PK734 at or above 6 000 ft, then track 232° to cross GAYHA at or above 6 000 ft and hold.

6 000	PK733	PK734 6 000	GAYHA 6 000
↑	✧	✧	✧
	TR 046°	TR 316°	TR 232°



TRANSITION ALT 14 000
TRANSITION LVL FL 140

CATEGORY	A	B	C	D
LNAV/VNAV				
LNAV				
CIRCLING		1 700-3	1 687(1 700-3)	

Change : Information of MAG VAR(7° W → 9° W) and instrument approach procedure for RWY 18L/R.

BUSAN/Gimhae Int'l(RKPK)
RNP B RWY 18L/R

AERONAUTICAL DATA TABULATION

Instrument Approach Procedure Coding Tables

RNP B RWY 18L/R

Serial Number	Path Descriptor	Waypoint Identifier	Fly-over	Course/Track °M(°T)	Distance (NM)	Turn direction	Altitude (ft)	Speed (kt)	Coordinates	VPA/ TCH	Navigation specification	Remarks
001	TF	GAYHA	-	-	-	-	+6 000	-	35°13'22.4"N 128°37'54.4"E	-	RNP APCH	IAF
002	TF	OVTUS	-	180.88(172.36)	6.75	-	+5 000	-	35°06'40.3"N 128°39'00.0"E	-	RNP APCH	-
003	TF	NOORI	-	135.89(127.37)	7.95	-	+4 000	-210	35°01'50.0"N 128°46'41.8"E	-	RNP APCH	IF
004	TF	PK731	-	045.96(037.44)	2.82	-	+3 500	-	35°04'04.7"N 128°48'47.2"E	-	RNP APCH	-
005	TF	WAYBI	-	045.98(037.46)	2.9	-	+2 600	-	35°06'23.0"N 128°50'56.2"E	-	RNP APCH	FAF
006	TF	ZIKKO	Y	046.00(037.48)	4.3	-	+1 700	-	35°09'48.1"N 128°54'07.8"E	-	RNP APCH	MAPt
007	TF	PK733	-	046.03(037.51)	9.7	-	+3 500	-	35°17'30.5"N 129°01'20.9"E	-	RNP APCH	-
008	TF	PK734	-	316.10(307.58)	11.07	-	+6 000	-	35°24'15.6"N 128°50'37.2"E	-	RNP APCH	-
009	TF	GAYHA	-	232.33(223.81)	15.05	-	+6 000	-	35°13'22.4"N 128°37'54.4"E	-	RNP APCH	-
010	HM	GAYHA	-	271.05(262.53)	-	R	-10 000 +6 000	-210	35°13'22.4"N 128°37'54.4"E	-	-	1 min (Inbound timing)

Change : Information of instrument approach procedure for RWY 18L/R.